

# CORNER RESTORATION FORM

Township 4N Range 29E Section 20, 21 County UMATILLA

State OREGON Date 3/30/2023 Number P-9

Condition Report Only

Corner Designation : 1/4 CORNER: 20, 21

Not Found  
 Renewed

Previous Renewals ORIGINAL SOURCE OF CORNER

Surveyed In  
 Referenced

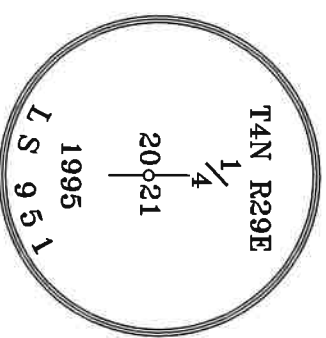
ORIGINALLY SURVEYED IN 1861 BY DAVENPORT UNDER  
 CONTRACT #101, HE SET A STAKE IN MOUND OF EARTH  
 1995 EDWARDS SET A 1"X30" I.P. W/ 2-3/8" BRASS CAP BY  
 SINGLE PROPORTION COUNTY SURVEY NO. 95-060-B &  
 CORNER FORM P9-95-060-B

### MONUMENT DETAIL

Found  Set

BASIS OF BEARINGS, NAD 83/91 OREGON STATE PLANE  
 COORDINATES NORTH ZONE:

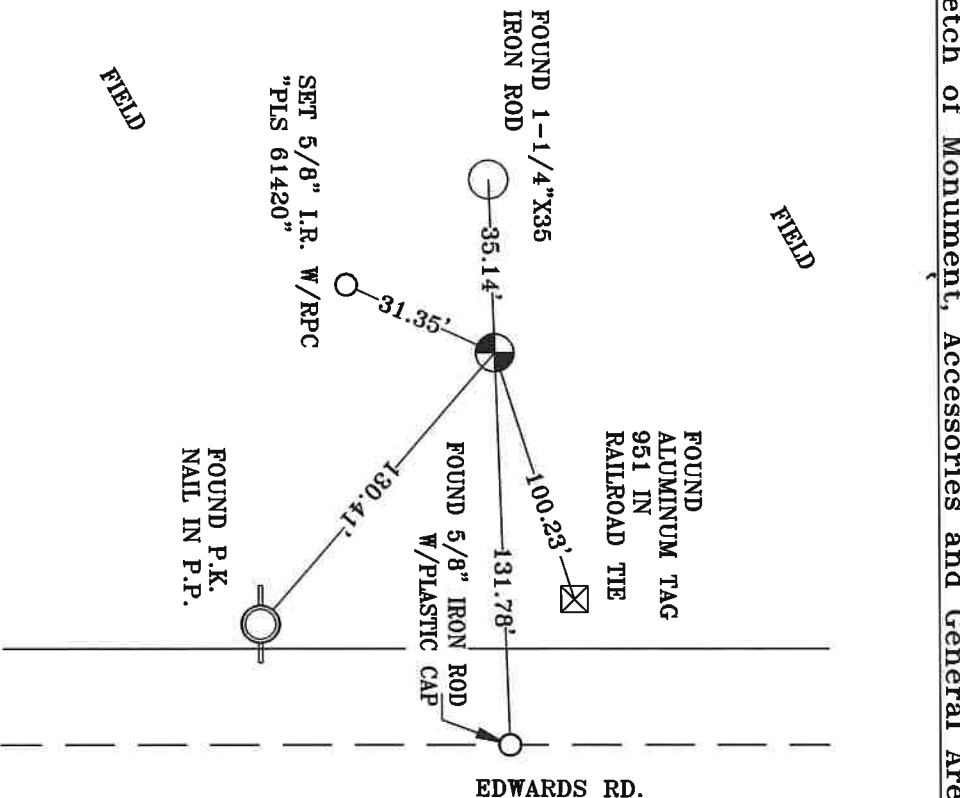
NORTHING: 785217.25  
 EASTING: 8532303.10



Monument & Accessories Set/Found (Procedure and Description)

- AT CORNER FOUND A 2 3/8" BRASS CAP 6" BELOW GRADE & UMATILLA MON. SIGN, COUNTY SURVEY NO. 95-060-B
- FOUND A 1-1/4"X35" I.R. 3" BELOW GRADE S 88°02' W 35.14', CORNER FORM NO. P9-95-060-B
- FOUND A 5/8" I.R. N 88°03' E 131.78', CORNER FORM NO. P9-95-060-B
- FOUND A ALUMINIUM TAG 951 IN R.R. TIE FENCE POST N 72°32' E 100.23', CORNER FORM NO. P9-95-060-B
- FOUND A P.K. NAIL IN P.P. S 49°03 E 130.41', CORNER FORM NO. P9-02-048-G
- SET A 5/8" I.R. W/RPC "PLS 61420" 1" BELOW GRADE S 24°26' W 31.35'

### Sketch of Monument, Accessories and General Area



**REGISTERED  
 PROFESSIONAL  
 LAND SURVEYOR**

*Lance Clark King*  
 OREGON  
 MAY 10, 2011  
 LANCE CLARK KING  
 61420

**RENEWALS: 6/30/2023**

Agency: **CK3, LLC**  
 945 W. ORCHARD  
 HERMISTON OREGON 97838  
 OFFICE: 541-567-2345  
 FAX: 541-567-2305  
 WEB: CK3ILC.NET  
 Field Book # 0-350

COUNTY SURVEYOR  
 RECORDING INFO

Received CT  
 Filed 5/4/23  
 Survey No. 23-042-C  
 Drawing No. \_\_\_\_\_  
 Index No. P-9