

# OREGON CORNER RESTORATION FORM

SECTION 23 TOWNSHIP 4 NORTH RANGE 29 EAST P-21  
 COUNTY : UMATILLA DATE 8-98

CORNER DESIGNATION

EAST 1/4

\_\_\_ CONDITION REPORT ONLY  
 \_\_\_ NOT FOUND  
 \_\_\_ RENEWED  
 \_\_\_ UNCOVERED  
 X SURVEYED IN  
 X REFERENCED

PREVIOUS RENEWALS / SURVEYS, ETC.

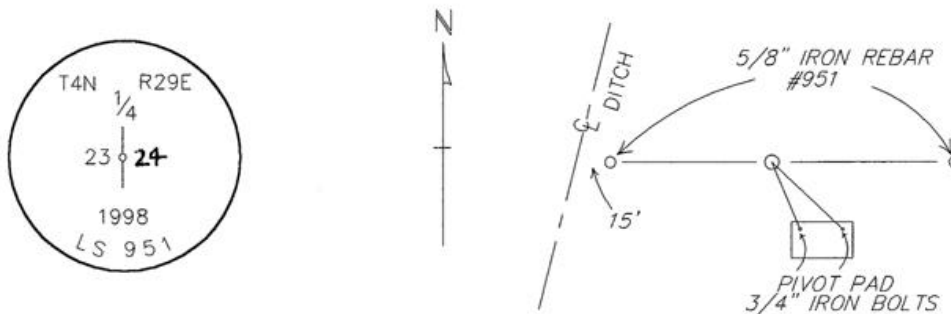
ORIGINALLY SURVEYED IN 1861 BY DAVENPORT UNDER CONTRACT #101. HE SET A POST IN A MOUND OF EARTH AND A CHARRED STAKE.

MONUMENTS AND ACCESSORIES FOUND: CONDITION AND SOURCE

NOTHING

SKETCH

MONUMENT DETAIL



MONUMENT SET ( PROCEDURES AND DESCRIPTION )

BY SINGLE PROPORTION I SET 1" X 30" IRON PIPE WITH 2 3/8" BRASS CAP STAMPED AS ABOVE 13" BELOW THE SURFACE OF A CULTIVATED FIELD.

NEW ACCESSORIES FROM WHICH

A 5/8" X 30" IRON REBAR WITH PLASTIC CAP #951 LIES S 89°.11'29" E, 512.61 FEET.  
 A 5/8" X 30" IRON REBAR WITH PLASTIC CAP #951 LIES S 89°.58'36" W, 440.23 FEET.  
 A 3/4" IRON BOLT IN THE NW CORNER OF A CONCRETE SLAB LIES S 30°.35'00" E, 14.68 FEET.  
 A 3/4" IRON BOLT IN THE NE CORNER OF A CONCRETE SLAB LIES S 53°.34'30" E, 21.20 FEET.

LOCATION AND COMMENTS

20' NW OF A CENTER PIVOT.

COMPASS DEC.

SURVEYOR'S SEAL

FIRM/AGENCY  
 EDWARDS SURVEYING  
 P.O. BOX 763  
 HERMISTON, OREGON 97838  
 97838

PARTY CHIEF  
 D. EDWARDS

NOTES

WITNESS  
 RICK SMITH

RECEIVED BY  
 Umatilla County Surveyor  
 Date 10-98  
 Rec'd By [Signature]  
 No. 98-213-C

REGISTERED  
 PROFESSIONAL  
 LAND SURVEYOR

[Signature]

OREGON  
 JULY 16, 1971  
 G. DENNIS EDWARDS  
 951  
 RENEWS 12/31/99