

OREGON CORNER RESTORATION FORM

SECTION 16,17,20,21 TOWNSHIP 4 NORTH RANGE 29 EAST N-9

COUNTY : UMATILLA DATE MAY/20

CORNER DESIGNATION

- CONDITION REPORT ONLY
- NOT FOUND
- RENEWED
- UNCOVERED
- SURVEYED IN
- REFERENCED

SECTION CORNER

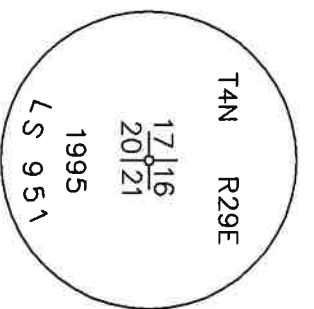
PREVIOUS RENEWALS / SURVEYS, ETC.

ORIGINALLY SURVEYED IN 1861 BY DAVENPORT UNDER CONTRACT #101. HE SET A POST IN A MOUND OF EARTH AND A CHARRED STAKE. IN 1995 EDWARDS SET A 2 3/8" BC STAMPED AS BELOW.

MONUMENTS AND ACCESSORIES FOUND: CONDITION AND SOURCE

- A 5/8" IRON ROD WITH AN ALUMINUM TAG #951 LIES N 89°00'57" E, 134.04 FEET.
- A 1 1/4" REBAR LIES S 0°37'14" E, 4.74 FEET.
- A 2 3/8" BC STAMPED AS BELOW.

MONUMENT DETAIL

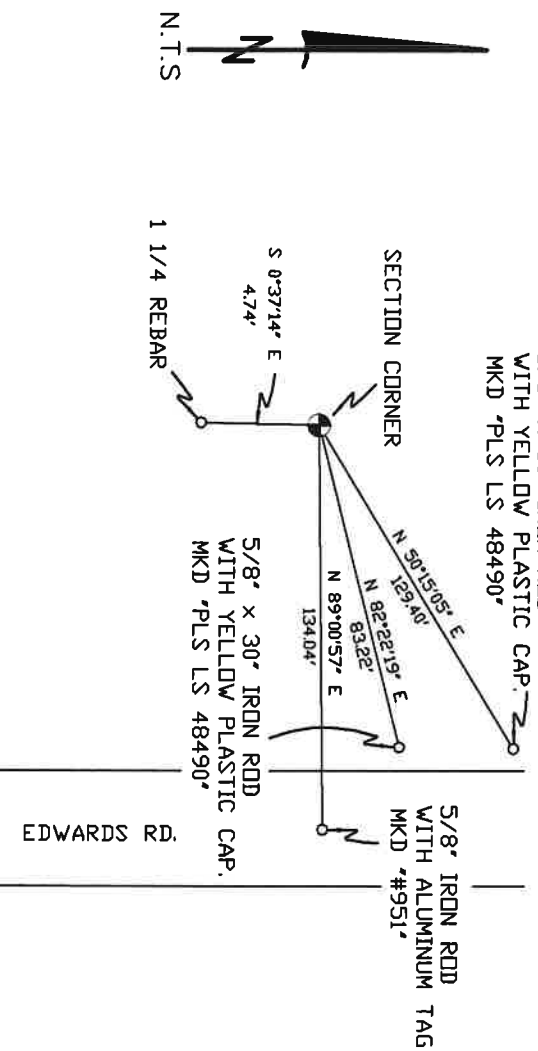


NAD 83/91
OREGON STATE PLANE
INTERNATIONAL FEET

787866.50
8532255.40

MONUMENT SET (PROCEDURES AND DESCRIPTION)

SKETCH



NEW ACCESSORIES FROM WHICH

- A 5/8" x 30" IRON ROD WITH A YELLOW PLASTIC CAP MKD "PLS LS 48490" LIES N 50°15'05" E, 129.40 FEET.
- A 5/8" x 30" IRON ROD WITH A YELLOW PLASTIC CAP MKD "PLS LS 48490" LIES N 82°22'19" E, 83.22 FEET.

LOCATION AND COMMENTS

FROM INTERSECTION OF HIGHLAND EXTENSION AND EDWARDS RD. GO SOUTH 1 MILE. CORNER IS 134' WEST OF EDWARDS RD.

COMPASS DEC.

SURVEYOR'S SEAL

FIRM/AGENCY
PRIMM LAND SURVEYING
P.O. BOX 1322
HERMISTON, OREGON 97838

REGISTERED
PROFESSIONAL
LAND SURVEYOR

PARTY CHIEF
BRIT L. PRIMM

NOTES

OREGON
JULY 12, 2005
KEITH P. PRIMM
48490

WITNESS
KETH P. PRIMM

EXPIRATION DATE: 12/31/20

21-004-c

Φ 1 DEC 20