

# OREGON CORNER RESTORATION FORM

SECTION 19 TOWNSHIP 4 NORTH RANGE 29 EAST N-3

COUNTY : UMATILLA DATE 01-2002

CORNER DESIGNATION

N 1/4 CORNER

- CONDITION REPORT ONLY
- NOT FOUND
- RENEWED
- UNCOVERED
- SURVEYED IN
- REFERENCED

PREVIOUS RENEWALS / SURVEYS, ETC.

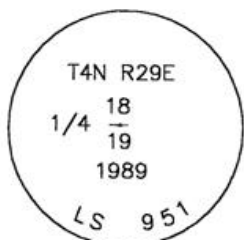
ORIGINALLY SURVEYOR WAS DAVENPORT 1861 #101. HE SET POST, DROVE CHARRED STAKE, MADE PITS AND MOUNDS. BY SINGLE PROPORTION I SET A 1" X 30" IRON PIPE WITH FLARED BOTTOM AND A 2 3/8" BRASS CAP STAMPED AS BELOW, 6" ABOVE SURFACE & PILED CHUNKS OF CONCRETE AROUND IT. SEE MY 10/26/89 SURVEY FOR CHET PRIOR

MONUMENTS AND ACCESSORIES FOUND: CONDITION AND SOURCE

FOUND A 2 3/8" BRASS CAP FLUSH WITH THE SURFACE OF GROUND, STAMPED AS BELOW. FROM WHICH:

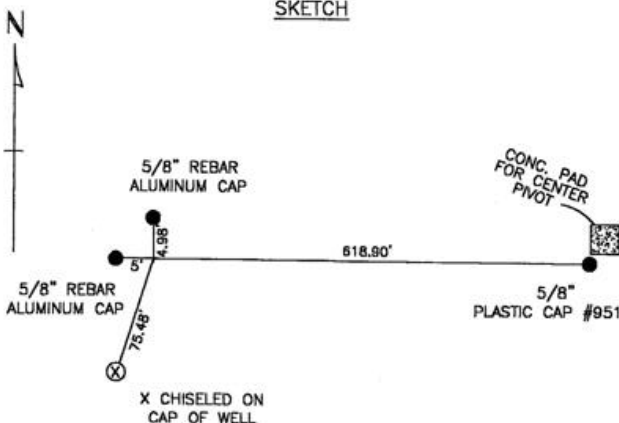
- A CHISELED X ON TOP OF WELL CASING BEARS S 18°05'08" W 75.48 FEET
- A 5/8" X 30" REBAR WITH ALUMINUM CAP BEARS S 89°47'21" W 5.0 FEET
- A 5/8" X 30" REBAR WITH ALUMINUM CAP BEARS N 0°01'53" E 4.98 FEET

MONUMENT DETAIL



NAD 83/91  
OREGON STATE PLANE  
INTERNATIONAL FEET  
787694.2339  
8524323.5595

SKETCH



MONUMENT SET ( PROCEDURES AND DESCRIPTION )

NA

NEW ACCESSORIES FROM WHICH

SET 5/8" X 30" REBAR WITH PLASTIC CAP #951 @ THE SW CORNER OF CONCRETE PAD FOR IRRIGATION PIVOT BEARS S 89°35'55" E 618.90 FEET

LOCATION AND COMMENTS

FROM INTERSECTION OF FEEDVILLE AND CANAL ROADS, GO NORTH ON CANAL 1.0 MILE, THEN WEST 0.5 MILE TO CORNER

COMPASS DEC.

FIRM/AGENCY  
EDWARDS SURVEYING  
P.O. BOX 763  
HERMISTON, OREGON 97838

PARTY CHIEF  
CURTIS FAVOREL

NOTES

WITNESS  
WALT MUNDELL

SURVEYOR'S SEAL

REGISTERED  
PROFESSIONAL  
LAND SURVEYOR

*G. Dennis Edwards*

OREGON  
JULY 16, 1971  
G. DENNIS EDWARDS  
9 5 1

RECEIVED BY

Umatilla County Surveyor  
Date 2-02  
Rec'd By KK  
No 02-48-g

RENEWS 12/31/2003