

# OREGON CORNER RESTORATION FORM

SECTION 13,18,19,24 TOWNSHIP 4 NORTH RANGE 29,30 EAST N-25

COUNTY : UMATILLA DATE MAY/20

CORNER DESIGNATION

CONDITION REPORT ONLY

SECTION CORNER

NOT FOUND

RENEWED

UNCOVERED

SURVEYED IN

REFERENCED

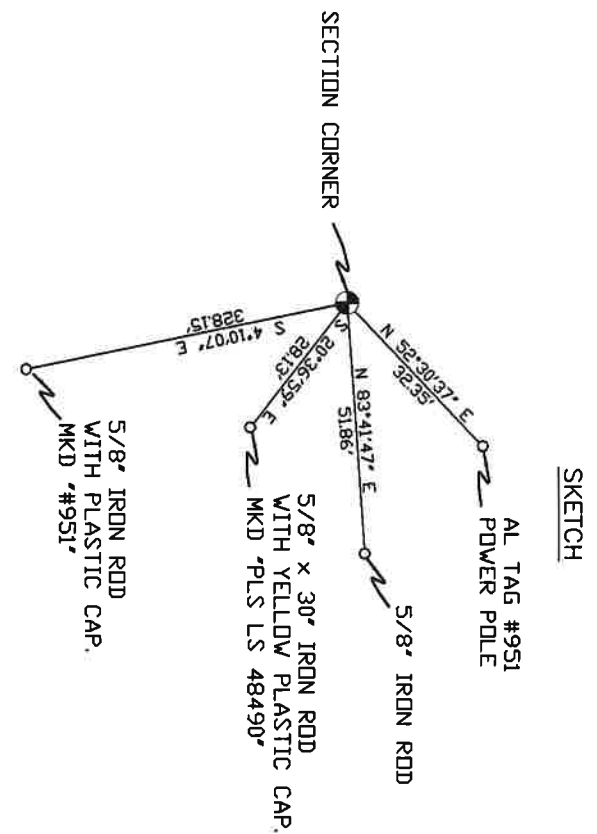
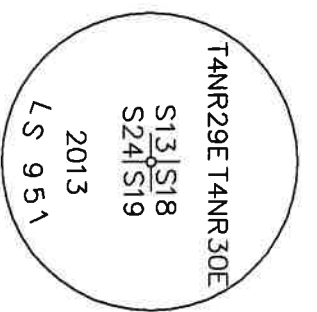
PREVIOUS RENEWALS / SURVEYS, ETC.

ORIGINALLY SURVEYED IN 1861 BY CAMPBELL UNDER CONTRACT #95. HE SET A POST IN A MOUND OF EARTH AND A CHARRED STAKE. IN 2013 EDWARDS SET A 2 3/8" BC STAMPED AS BELOW.

MONUMENTS AND ACCESSORIES FOUND: CONDITION AND SOURCE

A 5/8" IRON ROD WITH A PLASTIC CAP MKD "951" LIES S 4°10'07" E, 328.15' FEET  
 A 5/8" IRON ROD LIES N 83°41'47" E, 51.86 FEET  
 AN ALUMINUM TAG "951" ON A POWER POLE LIES N 52°30'37" E, 32.35 FEET  
 A 2 3/8" BC STAMPED AS BELOW.

MONUMENT DETAIL



MONUMENT SET ( PROCEDURES AND DESCRIPTION )

NAD 83/91  
 OREGON STATE PLANE  
 INTERNATIONAL FEET

788362.83  
 8553386.78

NEW ACCESSORIES FROM WHICH

A 5/8" x 30" IRON ROD WITH A YELLOW PLASTIC CAP MKD "PLS LS 48490" LIES S 20°36'59" E, 28.13 FEET.

LOCATION AND COMMENTS

FROM INTERSECTION OF FEEDVILLE RD. AND LARGE POWER LINE GO NORTH ALONG POWER LINE 1.0 MILE TO CORNER.

COMPASS DEC.

SURVEYOR'S SEAL

FIRM/AGENCY  
 PRIMM LAND SURVEYING  
 P.O. BOX 1322  
 HERMISTON, OREGON 97838

REGISTERED  
 PROFESSIONAL  
 LAND SURVEYOR

PARTY CHIEF  
 PAUL P. PILCH

NOTES

OREGON  
 JULY 12, 2005  
 KEITH P. PRIMM  
 48490

WITNESS  
 KETH P. PRIMM

EXPIRATION DATE: 12/31/20

21-004-C

Φ 1 D E C 20