

OREGON CORNER RESTORATION FORM

SECTION 24 TOWNSHIP 4 NORTH RANGE 29 EAST N-25

COUNTY : UMATILLA DATE 11-2001

CORNER DESIGNATION

NE CORNER

- CONDITION REPORT ONLY
- NOT FOUND
- RENEWED
- UNCOVERED
- SURVEYED IN
- REFERENCED

PREVIOUS RENEWALS / SURVEYS, ETC.

ORIGINALLY SURVEYED IN 1860 BY CAMBELL UNDER CONTRACT #95. HE SET A POST IN A MOUND OF EARTH AND A CHARRED STAKE.

IN 1998 EDWARDS SET A 1"X30" IRON PIPE WITH A 2 3/8" BRASS CAP BY SINGLE PROPORTION.

MONUMENTS AND ACCESSORIES FOUND: CONDITION AND SOURCE

FOUND A 2 3/8" BRASS CAP STAMPED AS BELOW.

FROM WHICH:

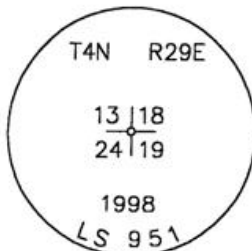
A 1/2" IRON REBAR AND PLASTIC CAP #951 BEARS N 67°34'35" E 27.70 FEET.

AN ALUMINUM TAG #951 IN POWER POLE BEARS N 52°30'37" E 32.26 FEET.

A 5/8" IRON REBAR WITH PLASTIC CAP #951 BEARS N 0°04'02" E 14.11 FEET.

A 5/8" IRON REBAR WITH PLASTIC CAP #951 BEARS S 1°48'08" E 843.03 FEET.

MONUMENT DETAIL

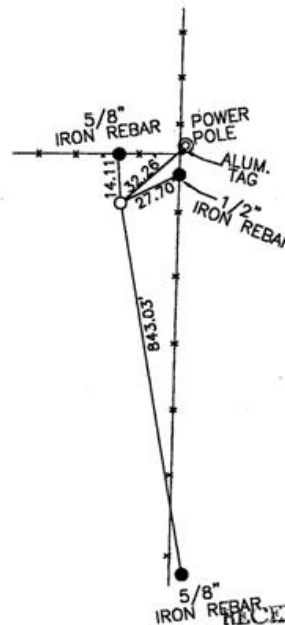


NAD 83/91
OREGON STATE PLANE
INTERNATIONAL FEET
788362.8199
8553386.6738

MONUMENT SET (PROCEDURES AND DESCRIPTION)

NEW ACCESSORIES FROM WHICH

SKETCH



RECEIVED BY
Umatilla County Surveyor
Date 12-01
Rec'd By KK
No. 01-213-9

LOCATION AND COMMENTS
FROM THE INTERSECTION OF
FEEDVILLE ROAD WITH LARGE
POWER LINE, GO NORTH ALONG
POWER LINE 1.0 MILES TO
CORNER.

COMPASS DEC.

FIRM/AGENCY
EDWARDS SURVEYING
P.O. BOX 763
HERMISTON, OREGON 97838

PARTY CHIEF
D. EDWARDS

NOTES

WITNESS
CURTIS J FAVOREL

SURVEYOR'S SEAL

REGISTERED
PROFESSIONAL
LAND SURVEYOR

G. Dennis Edwards

OREGON
JULY 16, 1971
G. DENNIS EDWARDS
9 5 1
RENEWS 12/31/2001