

CORNER RESTORATION FORM

Township 4N Range 29E Section 15,16,21,22 County UMATILLA

State OREGON Date 3/30/2023 Number N-13 Condition Report Only

Corner Designation : SECTION CORNER: 15, 16, 21, 22 Not Found

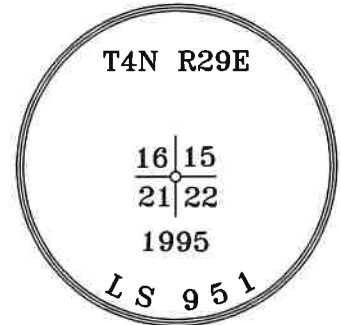
Previous Renewals ORIGINAL SOURCE OF CORNER

ORIGINALLY SURVEYED IN 1861 BY DAVENPORT UNDER
 CONTRACT #101, HE SET A STAKE IN MOUND OF EARTH
 1995 EDWARDS SET A 1"X30" I.P. W/ 2-3/8" BRASS CAP BY
 DOUBLE PROPORTION COUNTY SURVEY NO. 95-059-B &
 CORNER FORM N13-95-059-B

Surveyed In
 Referenced

MONUMENT DETAIL

Found Set



BASIS OF BEARINGS, NAD 83/91 OREGON STATE PLANE
 COORDINATES NORTH ZONE:

NORTHING: 788040.80
 EASTING: 8537506.15

Monument & Accessories Set/Found (Procedure and Description)

AT CORNER FOUND A 2 3/8" BRASS CAP, AS PER COUNTY SURVEY NO. 95-059-B & CORNER FORM NO. N13-95-059-B

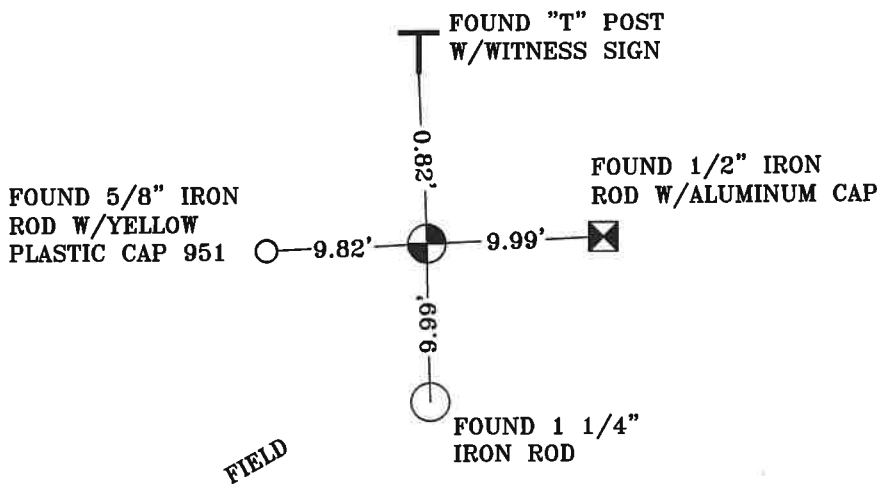
FOUND A T POST W/WITNESS SIGN N 02°53' E 0.82', CORNER FORM NO. N13-95-059-B

FOUND A 1/2" I.R. W/ALUMINUM CAP N 88°15' E 9.99', CORNER FORM NO. N13-95-059-B

FOUND A 1 1/4" I.R. S 01°02' E 9.99', CORNER FORM NO. N13-95-059-B

FOUND A 5/8" I.R. W/YPC 951 S 87°28' W 9.82', CORNER FORM NO. N13-95-059-B

Sketch of Monument, Accessories and General Area



**REGISTERED
 PROFESSIONAL
 LAND SURVEYOR**

Lance Clark King

**OREGON
 MAY 10, 2011
 LANCE CLARK KING
 61420**

RENEWS: 6/30/2023

Agency:
 CK3, LLC
 945 W. ORCHARD
 HERMISTON OREGON 97838
 OFFICE: 541-567-2345
 FAX: 541-567-2305
 WEB: CK3LLC.NET
 Field Book # 0-350

**COUNTY SURVEYOR
 RECORDING INFO**

Received CT

Filed 5/4/23

Survey No. 23-042-C

Drawing No. _____

Index No. N-13