

OREGON CORNER RESTORATION FORM

SECTION 16.21 TOWNSHIP 4 NORTH RANGE 29 EAST

N-11

COUNTY : UMATILLA DATE MAY/20

CORNER DESIGNATION

X CONDITION REPORT ONLY
NOT FOUND

1/4 CORNER

RENEWED
 UNCOVERED
 SURVEYED IN
 REFERENCED

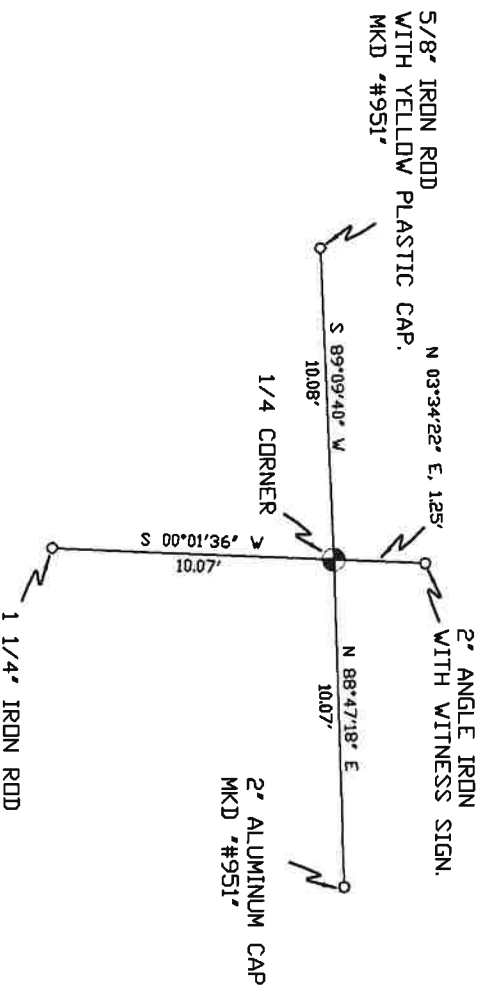
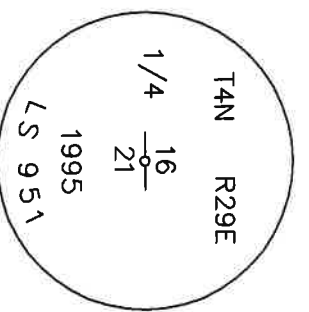
PREVIOUS RENEWALS / SURVEYS, ETC.

ORIGINALLY SURVEYED IN 1861 BY DAVENPORT UNDER CONTRACT #101. HE SET A POST IN A MOUND OF EARTH AND A CHARRED STAKE. IN 1995 EDWARDS SET A 1" x 30" IRON PIPE WITH A 2 3/8" BC STAMPED AS BELOW, BY SINGLE PROPORTION.

MONUMENTS AND ACCESSORIES FOUND: CONDITION AND SOURCE

- A 2" ANGLE IRON WITH WITNESS SIGN LIES N 03°34'22" E, 1.25 FEET.
- A 5/8" IRON ROD WITH A YELLOW PLASTIC CAP MKD #951" LIES S 89°09'40" W, 10.08 FEET.
- A 1 1/4" IRON ROD LIES S 00°01'36" W, 10.07 FEET.
- A 2" ALUM. CAP MKD #951 LIES N 88°47'18" E, 10.07 FEET.
- A 2 3/8" BC STAMPED AS BELOW.

MONUMENT DETAIL



NAD 83/91
OREGON STATE PLANE
INTERNATIONAL FEET

787953.63
8534880.75

MONUMENT SET (PROCEDURES AND DESCRIPTION)

NEW ACCESSORIES FROM WHICH

LOCATION AND COMMENTS

FROM INTERSECTION OF HIGHLAND
EXTENSION WITH EDWARDS ROAD
GO SOUTH ON EDWARDS ROAD
1 MILE THEN EAST ACROSS
FIELD TO CORNER 1/2 MILE.

COMPASS DEC.

SURVEYOR'S SEAL

FIRM/AGENCY
PRIMM LAND SURVEYING
P.O. BOX 1322
HERMISTON, OREGON 97838

REGISTERED
PROFESSIONAL
LAND SURVEYOR

PARTY CHIEF
BRIT L. PRIMM

NOTES

OREGON
JULY 12, 2005
KEITH P. PRIMM
48490

WITNESS
KEITH P. PRIMM

EXPIRATION DATE: 12/31/20

KPM 21-004-c

Φ1 DEC 20