

OREGON CORNER RESTORATION FORM

SECTION 17,18 TOWNSHIP 4 NORTH RANGE 29 EAST

L-5

COUNTY : UMATILLA DATE MAY/20

CORNER DESIGNATION

1/4 CORNER

CONDITION REPORT ONLY

NOT FOUND

RENEWED

UNCOVERED

SURVEYED IN

REFERENCED

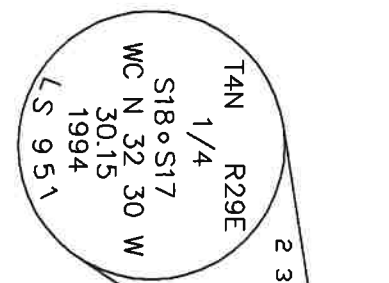
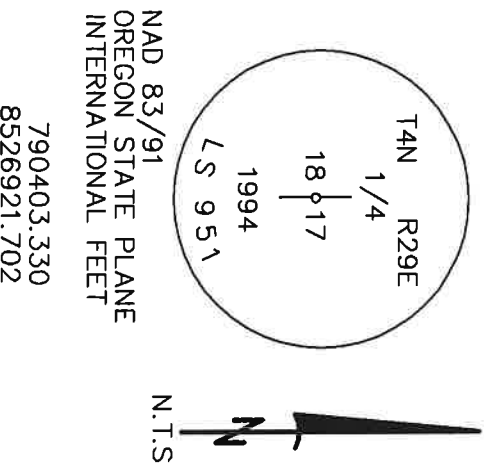
PREVIOUS RENEWALS / SURVEYS, ETC.

ORIGINALLY SURVEYED IN 1861 BY DAVENPORT UNDER CONTRACT #101. HE SET A POST IN A MOUND OF EARTH AND A CHARRED STAKE.
IN 1994 EDWARDS SET A 1" x 30" IRON PIPE WITH A 2 3/8" BC STAMPED AS BELOW,
6" BELOW SURFACE OF GRAVEL RD. BY SINGLE PROPORTION.

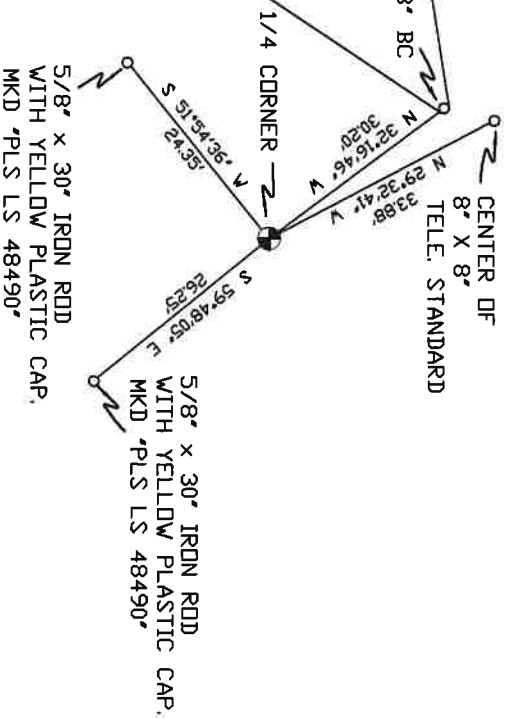
MONUMENTS AND ACCESSORIES FOUND: CONDITION AND SOURCE

A 2 3/8" B.C. STAMPED AS BELOW LIES N 32°16'46" W, 30.20 FEET.
CENTER OF AN 8" X 8" TELEPHONE STANDARD LIES N 29°32'41" W, 33.88 FEET.
A 2 3/8" BC STAMPED AS BELOW.

MONUMENT DETAIL



SKETCH



MONUMENT SET (PROCEDURES AND DESCRIPTION)

NAD 83/91
OREGON STATE PLANE
INTERNATIONAL FEET
790403.330
8526921.702

NEW ACCESSORIES FROM WHICH

A 5/8" x 30" IRON ROD WITH A YELLOW PLASTIC CAP MKD "PLS LS 48490" LIES S 51°54'36" W, 24.35 FEET.
A 5/8" x 30" IRON ROD WITH A YELLOW PLASTIC CAP MKD "PLS LS 48490" LIES S 59°48'05" E, 26.25 FEET.

LOCATION AND COMMENTS

FROM INTERSECTION OF HIGHLAND
EXTENSION AND CANAL RD.
GO SOUTH ON CANAL 1/2 MILE
TO CORNER.

COMPASS DEC.

SURVEYOR'S SEAL

FIRM/AGENCY
PRIMA LAND SURVEYING
P.O. BOX 1322
HERMISTON, OREGON 97838

REGISTERED
PROFESSIONAL
LAND SURVEYOR

PARTY CHIEF
BRIT L. PRIMM

NOTES

OREGON
JULY 12, 2005
KEITH P. PRIMM
48490

WITNESS
KEITH P. PRIMM

EXPIRATION DATE: 12/31/20

TAN 21-004-C

Φ1 DEC 20