

OREGON CORNER RESTORATION FORM

SECTION 17,18 TOWNSHIP 4 NORTH RANGE 29 EAST

L-5

COUNTY : UMATILLA DATE 02/02

CORNER DESIGNATION

1/4 CORNER

CONDITION REPORT ONLY

NOT FOUND

RENEWED

UNCOVERED

SURVEYED IN

REFERENCED

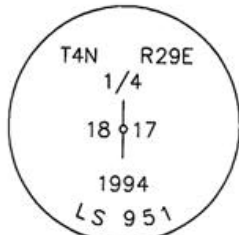
PREVIOUS RENEWALS / SURVEYS, ETC.

ORIGINALLY SURVEYED IN 1861 BY DAVENPORT UNDER CONTRACT #101. HE SET A POST IN A MOUND OF EARTH AND A CHARRED STAKE.
 IN 1994 EDWARDS SET A 1" x 30" IRON PIPE WITH A 2 3/8" BRASS CAP STAMPED AS BELOW, 6" BELOW SURFACE OF GRAVEL RD. BY SINGLE PROPORTION.

MONUMENTS AND ACCESSORIES FOUND: CONDITION AND SOURCE

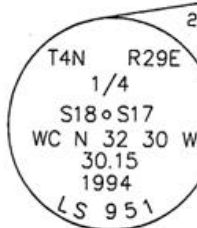
A 2 3/8" B.C. STAMPED AS BELOW LIES N 32°16'46" W, 30.20 FEET.
 CENTER OF AN 8" X 8" TELEPHONE STANDARD LIES N 29°32'41" W, 33.88 FEET.
 A 1/2" IRON ROD LIES S 45°04'39" W, 22.84 FEET.
 A 5/8" IRON ROD LIES N 89°30'31" E, 19.99 FEET.

MONUMENT DETAIL

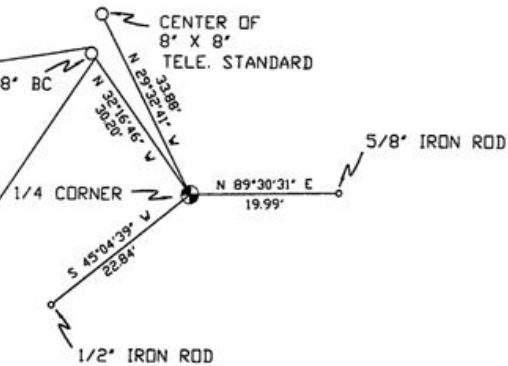


NAD 83/91
 OREGON STATE PLANE
 INTERNATIONAL FEET

790403.3536
 8526921.5778



SKETCH



MONUMENT SET (PROCEDURES AND DESCRIPTION)

NEW ACCESSORIES FROM WHICH

LOCATION AND COMMENTS

FROM INTERSECTION OF HIGHLAND
 EXTENSION AND CANAL RD.
 GO SOUTH ON CANAL 1/2 MILE
 TO CORNER.

COMPASS DEC.

FIRM/AGENCY
 PRIMM LAND SURVEYING
 P.O. BOX 1322
 HERMISTON, OREGON 97838

PARTY CHIEF
 KEITH P. PRIMM

NOTES

WITNESS
 BRIT L. PRIMM

SURVEYOR'S SEAL

REGISTERED
 PROFESSIONAL
 LAND SURVEYOR

Brit L. Primm
 OREGON
 JULY 13, 1999
 BRIT L. PRIMM
 48509

EXPIRATION DATE: 12/31/02

03-52-9