

OREGON CORNER RESTORATION FORM

SECTION: 14 TOWNSHIP: 4N RANGE: 29E L-21

COUNTY: UMATILLA DATE: 9/2013

CORNER DESIGNATION

E 1/4

- CONDITION REPORT ONLY**
- NOT FOUND**
- RENEWED**
- UNRECORDED**
- SURVEYED IN**
- REFERENCED OUT**

PREVIOUS RENEWALS/SURVEYS ETC.

Originally surveyed by Davenport under Contract #101 in 1861. He set a post in mound with charred stake.

In 2004 I set a 5/8" iron rebar with a 2" alum. cap 4" below the surface of a graveled road stamped as below.

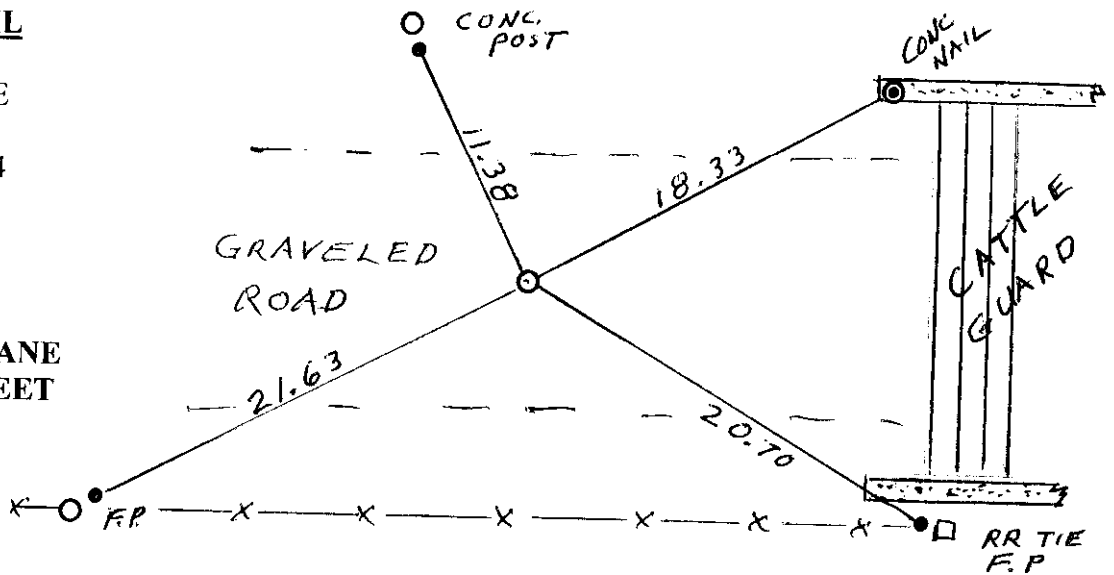
MONUMENTS AND ACCESSORIES FOUND: CONDITON AND SOURCE

Found 2" alum. cap stamped as below.

MONUMENT DETAIL

T4N R29E
1/4
S15 | S14
2004
LS 951

NAD 83/91
OREGON STATE PLANE
INTERNATIONAL FEET
790915.27
8548055.41



MONUMENT SET (PROCEDURES AND DESCRIPTION)

NEW ACCESSORIES FROM WHICH

- A conc. nail with washer #951 in the NW cor. of cattle guard bears N 61° 36' 06" E 18.33'
- A 5/8" x 30" Iron Rebar with plastic cap #951 bears N 26° 22' 52" W 11.38'
- A 5/8" x 30" Iron Rebar with plastic cap #951 bears S 62° 44' 39" W 21.63'
- A 5/8" x 30" Iron Rebar with plastic cap #951 bears S 59° 49' 38" E 20.70'

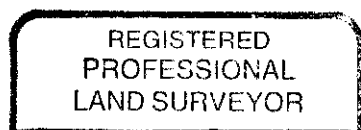
LOCATION AND COMMENTS

From the intersection of Loop Rd. with the East end of E Highland extension go South on Loop Rd. 0.5 mile. Then go East on a graveled road 0.5 mile to the corner.

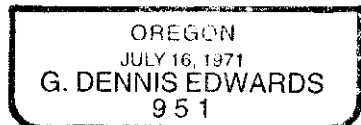
SURVEYOR'S SEAL

FIRM: EDWARDS SURVEYING LLC
PO BOX 763 - HERMISTON OR 97838

PARTY CHIEF: G. EDWARDS
WITNESS: R. SMITH



G. Dennis Edwards



RENEWS 12/31/13

13-532-C