

OREGON CORNER RESTORATION FORM

SECTION 14,15 TOWNSHIP 4 NORTH RANGE 29 EAST

L-17

COUNTY : UMATILLA DATE MAY/20

CORNER DESIGNATION

1/4 CORNER

CONDITION REPORT ONLY

NOT FOUND

RENEWED

UNCOVERED

SURVEYED IN

REFERENCED

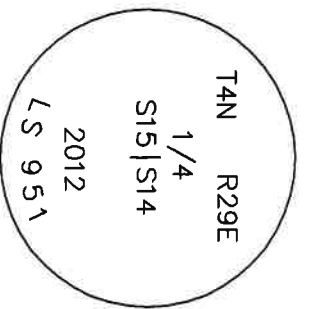
PREVIOUS RENEWALS / SURVEYS, ETC.

ORIGINALLY SURVEYED IN 1861 BY DAVENPORT UNDER CONTRACT #101. HE SET A POST IN A MOUND OF EARTH AND A CHARRED STAKE.
EDWARDS SET A 2 3/8" BC IN 2012.

MONUMENTS AND ACCESSORIES FOUND: CONDITION AND SOURCE

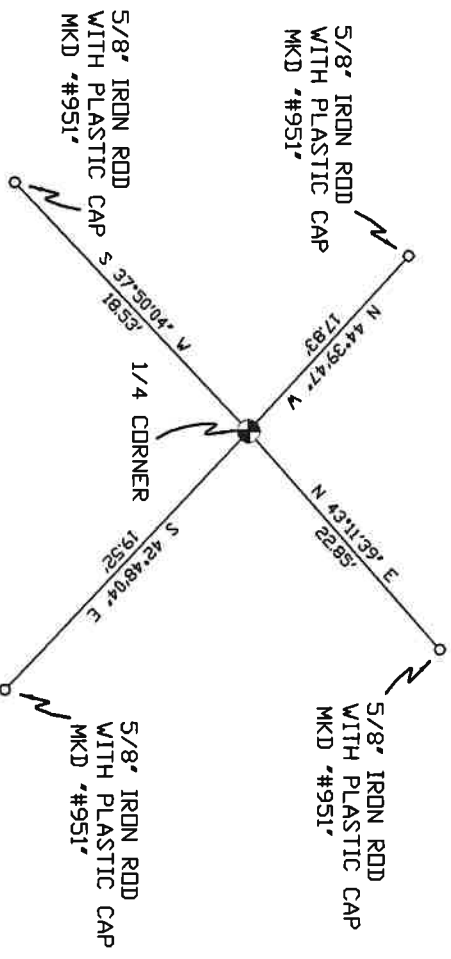
- A 5/8" IRON ROD WITH A PLASTIC CAP "#951" LIES N 43°11'39" E, 22.85 FEET.
- A 5/8" IRON ROD WITH A PLASTIC CAP "#951" LIES N 44°39'47" W, 17.83 FEET.
- A 5/8" IRON ROD WITH A PLASTIC CAP "#951" LIES S 37°50'04" W, 18.53 FEET.
- A 5/8" IRON ROD WITH A PLASTIC CAP "#951" LIES S 42°48'04" E, 19.52 FEET.
- A 2 3/8" BC STAMPED AS BELOW.

MONUMENT DETAIL



NAD 83/91
OREGON STATE PLANE
INTERNATIONAL FEET
790826.34
8542757.86

MONUMENT SET (PROCEDURES AND DESCRIPTION)



SKETCH

NEW ACCESSORIES FROM WHICH

LOCATION AND COMMENTS

FROM INTERSECTION OF LOOP RD. AND HIGHLAND EXTENSION GO WEST ON HIGHLAND EXTENSION 0.5 MILE THEN GO SOUTH 0.5 MILE ACROSS FIELD TO CORNER.

COMPASS DEC.

FIRM/AGENCY
PRIMM LAND SURVEYING
P.O. BOX 1322
HERMISTON, OREGON 97838

SURVEYOR'S SEAL

REGISTERED
PROFESSIONAL
LAND SURVEYOR

PARTY CHIEF
PAUL P. PILCH

NOTES

OREGON
JULY 12, 2005
KEITH P. PRIMM
48490

WITNESS
KEITH P. PRIMM

EXPIRATION DATE: 12/31/20

~~21A~~

21-004-C

Φ1 DEC 20