

OREGON CORNER RESTORATION FORM

SECTION 15,16 TOWNSHIP 4 NORTH RANGE 29 EAST

L-13

COUNTY : UMATILLA DATE 02/02

CORNER DESIGNATION

1/4 CORNER

X CONDITION REPORT ONLY

- NOT FOUND
- RENEWED
- UNCOVERED
- SURVEYED IN
- REFERENCED

PREVIOUS RENEWALS / SURVEYS, ETC.

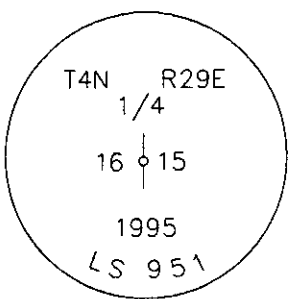
ORIGINALLY SURVEYED IN 1861 BY DAVENPORT UNDER CONTRACT #101. HE SET A POST IN A MOUND OF EARTH AND A CHARRED STAKE.
 IN 1995 EDWARDS SET A 1" x 30" IRON PIPE WITH A 2 3/8" BRASS CAP STAMPED AS BELOW BY SINGLE PROPORTION.

MONUMENTS AND ACCESSORIES FOUND: CONDITION AND SOURCE

- A 1/2" IRON ROD WITH AN ALUMINUM CAP LIES N 89°08'24" E, 10.01 FEET.
- A 1 1/4" IRON ROD LIES S 0°14'25" E, 9.99 FEET.
- AN ALUMINUM TAG #951 ON A RXR TIE LIES S 8°30'20" W, 117.55 FEET.
- A 5/8" IRON ROD WITH A PLASTIC CAP LIES S 88°55'36" W, 10.01 FEET.
- A 2' ANGLE IRON WITH WITNESS SIGN LIES N 0°05'42" W, 1.20 FEET.

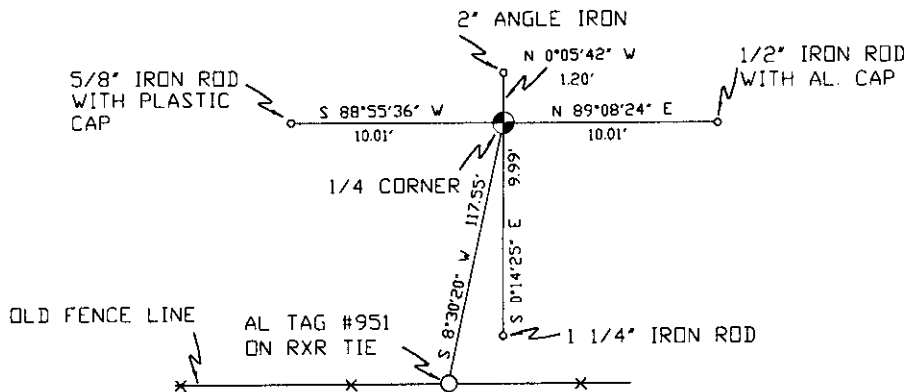
SKETCH

MONUMENT DETAIL



NAD 83/91
 OREGON STATE PLANE
 INTERNATIONAL FEET

790685.2139
 8537452.3217



MONUMENT SET (PROCEDURES AND DESCRIPTION)

NEW ACCESSORIES FROM WHICH

LOCATION AND COMMENTS

FROM INTERSECTION OF HIGHLAND EXT. AND EDWARDS RD. GO EAST ON HIGHLAND TO POWER LINE THEN GO SOUTH 1/2 MILE TO CORNER.

COMPASS DEC.

FIRM/AGENCY

PRIMM LAND SURVEYING
 P.O. BOX 1322
 HERMISTON, OREGON 97838

PARTY CHIEF

KEITH P. PRIMM

NOTES

WITNESS

BRIT L. PRIMM

SURVEYOR'S SEAL

REGISTERED
 PROFESSIONAL
 LAND SURVEYOR

Brit L. Primm

OREGON
 JULY 13, 1999
 BRIT L. PRIMM
 48509

EXPIRATION DATE:12/31/02

03-52-9