

# OREGON CORNER RESTORATION FORM

SECTION 13.18 TOWNSHIP 4 NORTH RANGE 28.29 EAST L-1

COUNTY : UMATILLA DATE MAY/20

CORNER DESIGNATION

1/4 CORNER

- CONDITION REPORT ONLY
- NOT FOUND
- RENEWED
- UNCOVERED
- SURVEYED IN
- REFERENCED

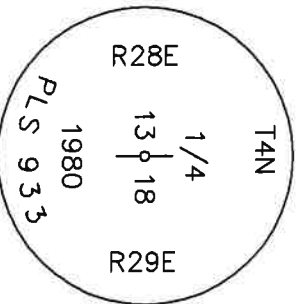
PREVIOUS RENEWALS / SURVEYS, ETC.

ORIGINALLY SURVEYED IN 1860 BY CAMPBELL UNDER CONTRACT #95. HE SET A POST IN A MOUND OF EARTH. IN 1980 KRUMBEN SET A 2 3/8" BC, SEE SURVEY # S-156-C.

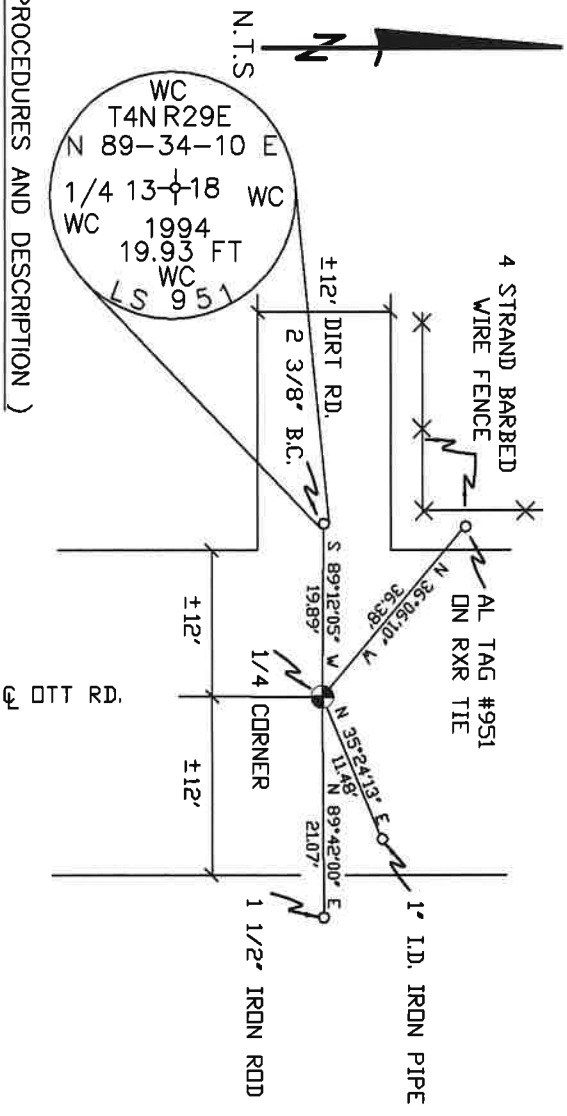
MONUMENTS AND ACCESSORIES FOUND: CONDITION AND SOURCE

- A 1" I.D. IRON PIPE LIES N 35°24'13" E, 11.48 FEET.
- AN ALUMINUM TAG #951 ON A RXR TIE LIES N 36°06'10" W, 36.38 FEET.
- A 1 1/2" IRON ROD 8" BELOW SURFACE LIES N 89°42'00" E, 21.07 FEET.
- A 2 3/8" B.C. STAMPED AS BELOW LIES S 89°12'05" W, 19.89 FEET.
- A 2 3/8" BC STAMPED AS BELOW.

MONUMENT DETAIL



SKETCH



NAD 83/91  
OREGON STATE PLANE  
INTERNATIONAL FEET  
790269.63  
8521099.76

MONUMENT SET ( PROCEDURES AND DESCRIPTION )

NEW ACCESSORIES FROM WHICH

LOCATION AND COMMENTS

FROM INTERSECTION OF HIGHLAND EXT. & OTT RD. GO SOUTH ON OTT 1/2 MILE TO CORNER.

COMPASS DEC.

SURVEYOR'S SEAL

FIRM/AGENCY  
PRIMM LAND SURVEYING  
P.O. BOX 1322  
HERMISTON, OREGON 97838

REGISTERED  
PROFESSIONAL  
LAND SURVEYOR

PARTY CHIEF  
BRIT L. PRIMM

NOTES

OREGON  
JULY 12, 2005  
KEITH P. PRIMM  
48490

WITNESS  
KEITH P. PRIMM

EXPIRATION DATE: 12/31/20

21-004-C

Φ1 DEC 20