

OREGON CORNER RESTORATION FORM

SECTION 13,18 TOWNSHIP 4 NORTH RANGE 28,29 EAST L-1

COUNTY : UMATILLA DATE 02/02

CORNER DESIGNATION

1/4 CORNER

- CONDITION REPORT ONLY
- NOT FOUND
- RENEWED
- UNCOVERED
- SURVEYED IN
- REFERENCED

PREVIOUS RENEWALS / SURVEYS, ETC.

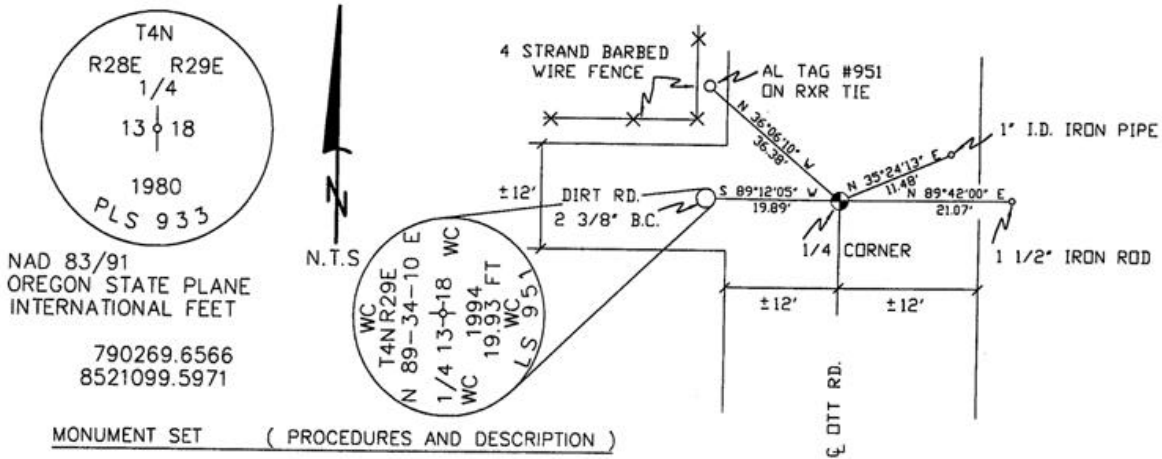
ORIGINALLY SURVEYED IN 1860 BY CAMPBELL UNDER CONTRACT #95. HE SET A POST IN A MOUND OF EARTH.
IN 1980 KRUMBEIN SET A 2 1/2" B.C., SEE SURVEY # S-156.

MONUMENTS AND ACCESSORIES FOUND: CONDITION AND SOURCE

A 1" I.D. IRON PIPE LIES N 35°24'13" E, 11.48 FEET.
AN ALUMINUM TAG #951 ON A RXR TIE LIES N 36°06'10" W, 36.38 FEET.
A 1 1/2" IRON ROD 8" BELOW SURFACE LIES N 89°42'00" E, 21.07 FEET.
A 2 3/8" B.C. STAMPED AS BELOW LIES S 89°12'05" W, 19.89 FEET.

MONUMENT DETAIL

SKETCH



T4N
R28E R29E
1/4
13 18
1980
PLS 933

NAD 83/91
OREGON STATE PLANE
INTERNATIONAL FEET

790269.6566
8521099.5971

MONUMENT SET (PROCEDURES AND DESCRIPTION)

NEW ACCESSORIES FROM WHICH

LOCATION AND COMMENTS

FROM INTERSECTION OF HIGHLAND
EXT. & OTT RD. GO SOUTH ON
OTT 1/2 MILE TO CORNER.

COMPASS DEC.

FIRM/AGENCY
PRIMM LAND SURVEYING
P.O. BOX 1322
HERMISTON, OREGON 97838

PARTY CHIEF
KEITH P. PRIMM

NOTES

WITNESS
BRIT L. PRIMM

SURVEYOR'S SEAL

REGISTERED
PROFESSIONAL
LAND SURVEYOR

Brit L. Primm
OREGON
JULY 13, 1999
BRIT L. PRIMM
48509

EXPIRATION DATE:12/31/02

03-52-9