

# OREGON CORNER RESTORATION FORM

SECTION 8.17 TOWNSHIP 4 NORTH RANGE 29 EAST J-7  
 COUNTY : UMATILLA DATE MAY/20

CORNER DESIGNATION

1/4 CORNER

- CONDITION REPORT ONLY
- NOT FOUND
- RENEWED
- UNCOVERED
- SURVEYED IN
- REFERENCED

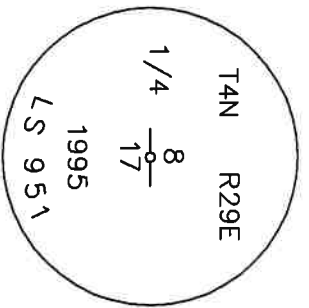
PREVIOUS RENEWALS / SURVEYS, ETC.

ORIGINALLY SURVEYED IN 1861 BY DAVENPORT UNDER CONTRACT #101. HE SET A POST IN A MOUND OF EARTH AND A CHARRED STAKE. IN 1974 KRUMBEN SET A BC, SEE SURVEY FOR PAT WALCHLI. IN 1995 EDWARDS SET A 1" x 30" IRON PIPE WITH A 2 3/8" BC STAMPED AS BELOW 5" BELOW SURFACE OF ROAD BY SINGLE PROPORTION.

MONUMENTS AND ACCESSORIES FOUND: CONDITION AND SOURCE

- A 2 3/8" BC STAMPED AS BELOW LIES N 32°07'03" E, 27.26 FEET.
- AN ALUMINUM TAG #951 ON A POWER POLE LIES N 84°30'50" W, 292.67 FEET.
- AN ALUMINUM TAG #951 ON A POWER POLE LIES N 80°43'50" E, 174.33 FEET.
- A 2 3/8" BC STAMPED AS BELOW LIES S 30°56'55" E, 44.04 FEET.
- A 2 3/8" BC STAMPED AS BELOW.

MONUMENT DETAIL



NAD 83/91  
 OREGON STATE PLANE  
 INTERNATIONAL FEET  
 793107.96  
 8529520.50

MONUMENT SET ( PROCEDURES AND DESCRIPTION )

NEW ACCESSORIES FROM WHICH

LOCATION AND COMMENTS

FROM INTERSECTION OF CANAL  
 RD. AND HIGHLAND EXT. GO  
 EAST ON HIGHLAND 1/2 MILE  
 TO CORNER.

COMPASS DEC.

FIRM/AGENCY  
PRIMM LAND SURVEYING  
 P.O. BOX 1322  
 HERMISTON, OREGON 97838

SURVEYOR'S SEAL

REGISTERED  
 PROFESSIONAL  
 LAND SURVEYOR

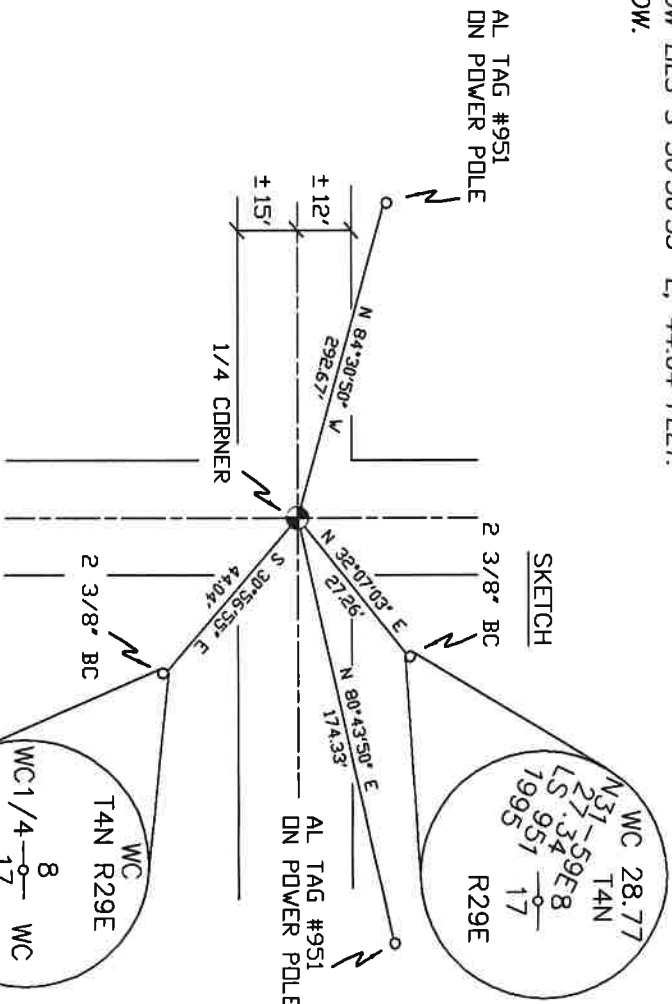
PARTY CHIEF  
BRIT L. PRIMM

NOTES

OREGON  
 JULY 12, 2005  
 KEITH P. PRIMM  
 48490

WITNESS  
KEITH P. PRIMM

EXPIRATION DATE: 12/31/20



*IMP*

21-004-C

Φ1 DEC 20