

OREGON CORNER RESTORATION FORM

Section 17 Township 4 N Range 29 E

J-5

County UMATILLA Date 3/95

CORNER DESIGNATION

NW Cor

- Condition Report Only
- Not Found
- Renewed
- Unrecorded
- Surveyed In
- Referenced Out

Previous Renewals/Surveys, etc. ORIG SUR. DAVENPORT 1861 # 101

He set a post in mound with charred stake

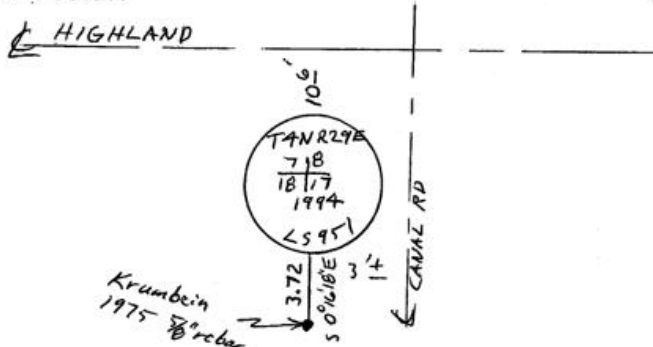
Krumbein set 5/8" rebar in 1975 sur. for Perkins

Monument(s) & Accessories Found: (Condition and Source)

End Krumbein's 5/8" rebar S 0°16'18" E 3.72 feet from Cor.

Monument Detail

Sketch



Monument Set (Procedures and Description)

By holding Krumbein's Easting and by proportion for Northing I set 1" x 30" I Pipe with 2 3/8" B.C. stamped as above at road surface

SEE MY 1992-1 COUNTY PUBLIC MONUMENTATION SUR.

New Accessories

Alum tag # 951 in P. Pole Bears N 26° 51' 50" W 33.83 FT.

Alum Tag # 951 in 18" Locust Bears N 22° 31' 20" E 76.32 FT.

Alum Tag # 951 in 15" Pine Bears S 79° 21' E 109.36 FT.

Alum Tag # 951 in P. Pole Bears S 6° 33' W 173.93 FT.

Location & Comments

Q Intersection

Canal Rd &

Highland Extension

Compass Declination _____

Firm/Agency EDWARDS

SURVEYING

Address P. Box 763

HERMISTON, OR 97838

Party Chief D. EDWARDS

Notes _____

Witness J. COPPOCK

Surveyor's Seal

REGISTERED
PROFESSIONAL
LAND SURVEYOR

G. Dennis Edwards

OREGON
JULY 16, 1971
G. DENNIS EDWARDS
951

RENEWS 12/31/95

RECEIVED BY _____
Umatilla County Surveyor _____
Date _____
Rec'd By _____
No. 95-59-B