

OREGON CORNER RESTORATION FORM

Section 7 Township 4 N Range 29 E

J-3

County UMATILLA Date 3/95

CORNER DESIGNATION

S 1/4

- Condition Report Only
- Not Found
- Renewed
- Unrecorded
- Surveyed In
- Referenced Out

Previous Renewals/Surveys, etc. ORIG SUR. DAVENPORT 1861 # 101  
He set a post in mound with charred stake

Monument(s) & Accessories Found: (Condition and Source)

Nothing Found.

Monument Detail

Sketch



Monument Set (Procedures and Description)

By single proportion I set 1" x 30" I. Pipe with 2 3/8"  
B.C. stamped as above

SEE MY 1992-1 COUNTY PUBLIC MONUMENTATION SUR.

New Accessories

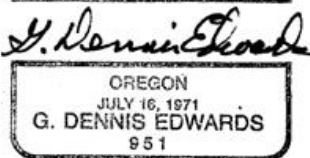
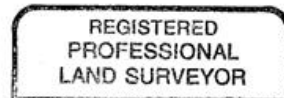
<u>Alum. tag # 951 in P. Pole</u>	<u>Bears</u>	<u>N 84° 58' 10" W</u>	<u>55.49 FT.</u>
<u>" " in 29' Locust "</u>	<u>"</u>	<u>N 85° 04' 40" E</u>	<u>38.76 FT.</u>
<u>" " in P. Pole "</u>	<u>"</u>	<u>S 39° 12' 50" E</u>	<u>54.83 FT.</u>
<u>" " in R.R. Tie F. Post "</u>	<u>"</u>	<u>N 41° E</u>	<u>1.16 FT.</u>

Location & Comments

From intersection  
Canal Rd with  
Highland Extension  
Go West on  
Highland 1/2 mile to  
CORRECTED BY

Compass Declination \_\_\_\_\_  
 Firm/Agency EDWARDS  
SURVEYING  
 Address P. Box 763  
HERMISTON, OR 97838  
 Party Chief D. EDWARDS

Surveyor's Seal



RENEWS 12/31/95

Umatilla County Surveyor  
 Date \_\_\_\_\_

Notes \_\_\_\_\_  
 Witness J. COPPOCK

Rec'd by \_\_\_\_\_  
 No. 75-59-B