

OREGON CORNER RESTORATION FORM

SECTION 12.13 TOWNSHIP 4 NORTH RANGE 29 EAST

J-23

COUNTY : UMATILLA DATE MAY/20

CORNER DESIGNATION

1/4 CORNER

CONDITION REPORT ONLY
 NOT FOUND
 RENEWED
 UNCOVERED
 SURVEYED IN
 REFERENCED

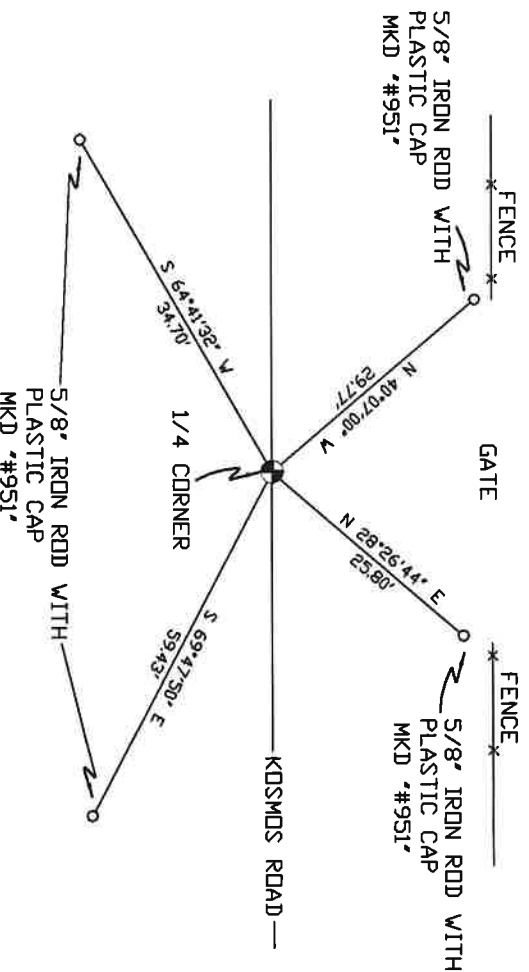
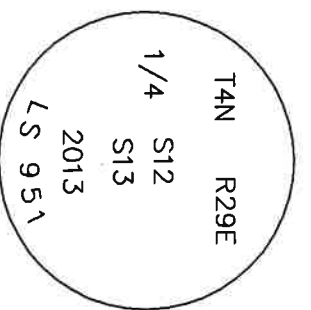
PREVIOUS RENEWALS / SURVEYS, ETC.

ORIGINALLY SURVEYED IN 1861 BY DAVENPORT UNDER CONTRACT #101. HE SET A POST IN A MOUND OF EARTH AND A CHARRD STAKE. EDWARDS SET A 2 3/8" BC IN 2013.

MONUMENTS AND ACCESSORIES FOUND: CONDITION AND SOURCE

- A 5/8" IRON ROD WITH A PLASTIC CAP "#951" LIES N 28°26'44" E, 25.80 FEET.
- A 5/8" IRON ROD WITH A PLASTIC CAP "#951" LIES S 69°47'50" E, 59.43 FEET.
- A 5/8" IRON ROD WITH A PLASTIC CAP "#951" LIES S 64°41'32" W, 34.70 FEET.
- A 5/8" IRON ROD WITH A PLASTIC CAP "#951" LIES N 40°07'00" W, 29.77 FEET.
- A 2 3/8" BC STAMPED AS BELOW.

MONUMENT DETAIL



MONUMENT SET (PROCEDURES AND DESCRIPTION)

NAD 83/91
 OREGON STATE PLANE
 INTERNATIONAL FEET
 793600.46
 8550651.22

NEW ACCESSORIES FROM WHICH

LOCATION AND COMMENTS

FROM INTERSECTION OF LOOP RD. AND KOSMOS RD. GO EAST ON KOSMOS RD. 1 MILE TO CORNER.

COMPASS DEC.

FIRM/AGENCY
 PRIMA LAND SURVEYING
 P.O. BOX 1322
 HERMISTON, OREGON 97838

SURVEYOR'S SEAL

REGISTERED
 PROFESSIONAL
 LAND SURVEYOR

PARTY CHIEF
 PAUL P. PILCH

NOTES

OREGON
 JULY 12, 2005
 KEITH P. PRIMM
 48490

WITNESS
 KEITH P. PRIMM

EXPIRATION DATE: 12/31/20

21-004-C

D1 DEC 20

TAP