

OREGON CORNER RESTORATION FORM

SECTION 10.15 TOWNSHIP 4 NORTH RANGE 29 EAST

J-15

COUNTY : UMATILLA DATE MAY/20

CORNER DESIGNATION

1/4 CORNER

CONDITION REPORT ONLY
 NOT FOUND
 RENEWED
 UNCOVERED
 SURVEYED IN
 REFERENCED

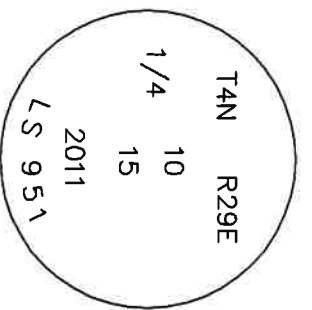
PREVIOUS RENEWALS / SURVEYS, ETC.

ORIGINALLY SURVEYED IN 1861 BY DAVENPORT UNDER CONTRACT #101. HE SET A POST IN A MOUND OF EARTH AND A CHARRED STAKE. EDWARDS SET A 2 3/8" BC IN 2011.

MONUMENTS AND ACCESSORIES FOUND: CONDITION AND SOURCE

- A 5/8" IRON ROD WITH A PLASTIC CAP "#951" LIES S 69°50'03" E, 150.90 FEET.
- A 5/8" IRON ROD WITH A PLASTIC CAP "#951" LIES S 4°27'42" E, 50.97 FEET.
- A 2 3/8" BC STAMPED AS BELOW.

MONUMENT DETAIL

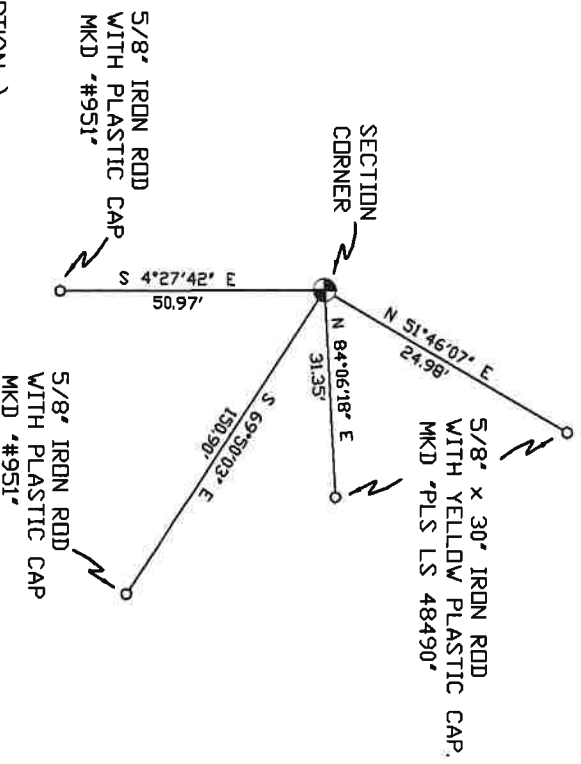


NAD 83/91
OREGON STATE PLANE
INTERNATIONAL FEET

793397.80
8540046.35

MONUMENT SET (PROCEDURES AND DESCRIPTION)

SKETCH



NEW ACCESSORIES FROM WHICH

- A 5/8" x 30" IRON ROD WITH A YELLOW PLASTIC CAP MKD "PLS LS 48490" LIES N 51°46'07" E, 24.98 FEET.
- A 5/8" x 30" IRON ROD WITH A YELLOW PLASTIC CAP MKD "PLS LS 48490" LIES N 84°06'18" E, 31.35 FEET.

LOCATION AND COMMENTS

FROM INTERSECTION OF EDWARDS RD. AND HIGHLAND EXTENSION RD. GO EAST ON HIGHLAND EXTENSION 1.5 MILE TO CORNER WEST OF PIVOT.

COMPASS DEC.

SURVEYOR'S SEAL

FIRM/AGENCY
PRIMM LAND SURVEYING
P.O. BOX 1322
HERMISTON, OREGON 97838

REGISTERED
PROFESSIONAL
LAND SURVEYOR

PARTY CHIEF
PAUL P. PILCH

NOTES

OREGON
JULY 12, 2005
KEITH P. PRIMM
48490

WITNESS
KEITH P. PRIMM

EXPIRATION DATE: 12/31/20

793397.80
21-004-C

Φ1 DEC 20