

# OREGON CORNER RESTORATION FORM

SECTION 9,10,15,16 TOWNSHIP 4 NORTH RANGE 29 EAST J-13

COUNTY : UMATILLA DATE 02/02

CORNER DESIGNATION

SECTION CORNER

- CONDITION REPORT ONLY
- NOT FOUND
- RENEWED
- UNCOVERED
- SURVEYED IN
- REFERENCED

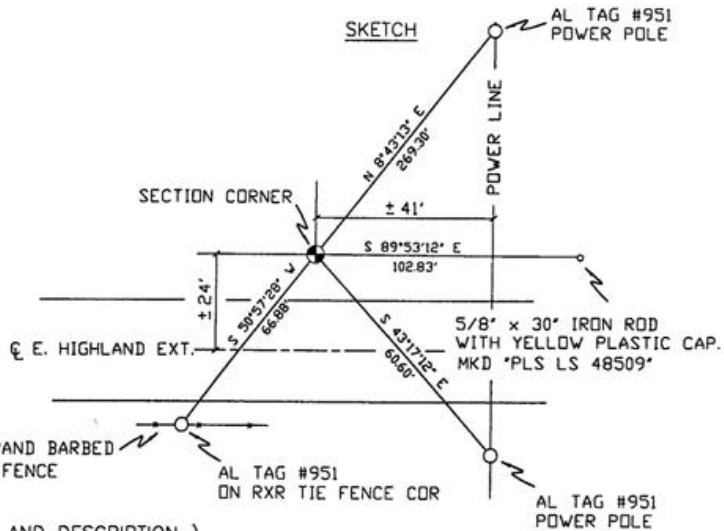
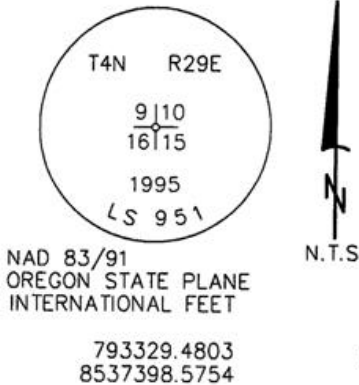
PREVIOUS RENEWALS / SURVEYS, ETC.

ORIGINALLY SURVEYED IN 1861 BY DAVENPORT UNDER CONTRACT #101. HE SET A POST IN A MOUND OF EARTH AND A CHARRED STAKE.  
 PALMER SET A 5/8" IRON ROD 30' N & 30' S OF HIS COMPUTED CORNER.  
 IN 1995 EDWARDS SET A 1" x 30" IRON PIPE WITH A 2 3/8" BRASS CAP STAMPED AS BELOW BY DOUBLE PROPORTION.

MONUMENTS AND ACCESSORIES FOUND: CONDITION AND SOURCE

AN ALUMINUM TAG #951 ON A POWER POLE LIES N 8°43'13" E, 269.30 FEET.  
 AN ALUMINUM TAG #951 ON A POWER POLE LIES S 43°17'12" E, 60.60 FEET.  
 AN ALUMINUM TAG #951 ON A RXR TIE FENCE COR LIES S 50°57'28" W, 66.88 FEET.

MONUMENT DETAIL



MONUMENT SET ( PROCEDURES AND DESCRIPTION )

NEW ACCESSORIES FROM WHICH

A 5/8" x 30" IRON ROD WITH A YELLOW PLASTIC CAP MKD "PLS LS 48509" LIES S 89°53'12" E, 102.83 FEET.

LOCATION AND COMMENTS

FROM INTERSECTION OF EDWARDS RD. AND HIGHLAND EXT. GO EAST ON HIGHLAND 1 MILE TO CORNER.

COMPASS DEC.

FIRM/AGENCY  
 PRIMM LAND SURVEYING  
 P.O. BOX 1322  
 HERMISTON, OREGON 97838

PARTY CHIEF  
 KEITH P. PRIMM

NOTES

WITNESS  
 BRIT L. PRIMM

SURVEYOR'S SEAL

REGISTERED  
 PROFESSIONAL  
 LAND SURVEYOR

*Brit L. Primm*  
 OREGON  
 JULY 13, 1999  
 BRIT L. PRIMM  
 48509

EXPIRATION DATE: 12/31/02

03-52-9