

OREGON CORNER RESTORATION FORM

SECTION 8,9 TOWNSHIP 4 NORTH RANGE 29 EAST
 COUNTY : UMATILLA DATE MAY/20

G-9

CORNER DESIGNATION

1/4 CORNER

- CONDITION REPORT ONLY
- NOT FOUND
- RENEWED
- UNCOVERED
- SURVEYED IN
- REFERENCED

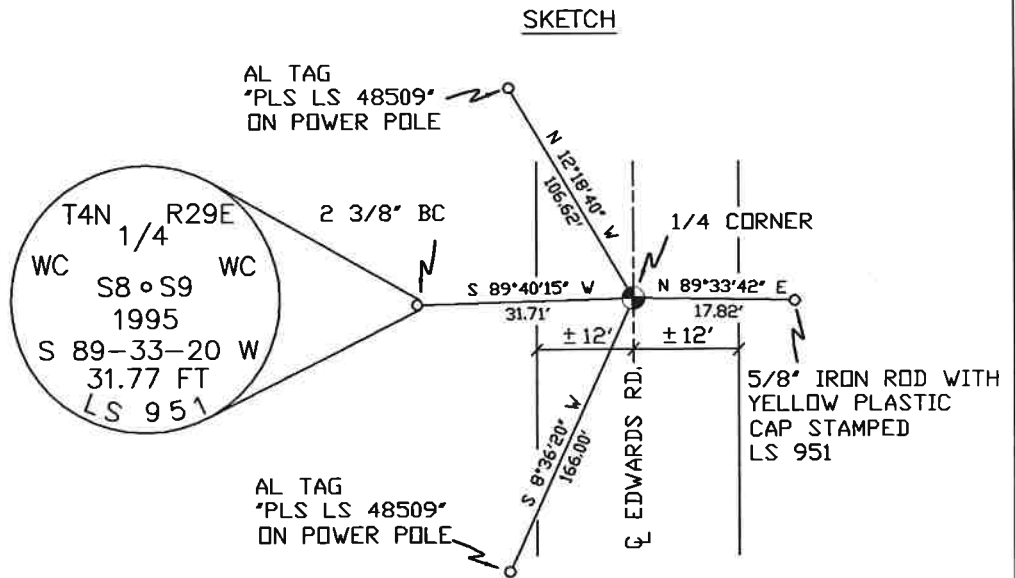
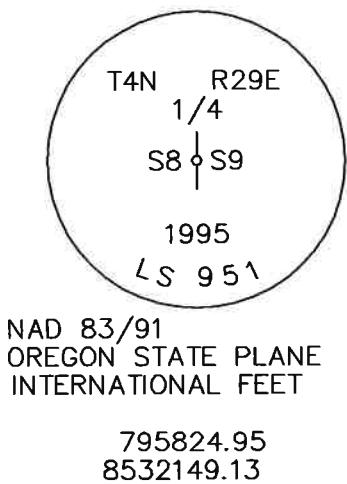
PREVIOUS RENEWALS / SURVEYS, ETC.

ORIGINALLY SURVEYED IN 1861 BY DAVENPORT UNDER CONTRACT #101. HE SET A POST IN A MOUND OF EARTH AND A CHARRED STAKE.
 IN 1995 EDWARDS SET A 1" x 30" IRON PIPE WITH A 2 3/8" BC STAMPED AS BELOW BY SINGLE PROPORTION.

MONUMENTS AND ACCESSORIES FOUND: CONDITION AND SOURCE

- A 2 3/8" BC STAMPED AS BELOW LIES S 89°40'15" W, 31.71 FEET.
- A 5/8" IRON ROD WITH A YELLOW PLASTIC CAP MKD "#951" LIES N 89°33'42" E, 17.82 FEET.
- A 1" x 1" ALUMINUM TAG MKD "PLS LS 48509" ON A POWER POLE LIES N 12°18'40" W, 106.62 FEET.
- A 1" x 1" ALUMINUM TAG MKD "PLS LS 48509" ON A POWER POLE LIES S 8°36'20" W, 166.00 FEET.
- A 2 3/8" BC STAMPED AS BELOW.

MONUMENT DETAIL



MONUMENT SET (PROCEDURES AND DESCRIPTION)

NEW ACCESSORIES FROM WHICH

LOCATION AND COMMENTS

FROM INTERSECTION OF HIGHLAND EXT. AND EDWARDS RD. GO NORTH ON EDWARDS 1/2 MILE TO CORNER.

COMPASS DEC.

FIRM/AGENCY
 PRIMM LAND SURVEYING
 P.O. BOX 1322
 HERMISTON, OREGON 97838

PARTY CHIEF
 BRIT L. PRIMM

NOTES

WITNESS
 KEITH P. PRIMM

SURVEYOR'S SEAL

REGISTERED
 PROFESSIONAL
 LAND SURVEYOR

Keith P. Primm
 OREGON
 JULY 12, 2005
 KEITH P. PRIMM
 48490

EXPIRATION DATE: 12/31/20

IMP

21-004-C

01 DEC 20