

# OREGON CORNER RESTORATION FORM

SECTION 7,8 TOWNSHIP 4 NORTH RANGE 29 EAST  
 COUNTY : UMATILLA DATE MAY/20

G-5

CORNER DESIGNATION

1/4 CORNER

CONDITION REPORT ONLY  
 NOT FOUND  
 RENEWED  
 UNCOVERED  
 SURVEYED IN  
 REFERENCED

PREVIOUS RENEWALS / SURVEYS, ETC.

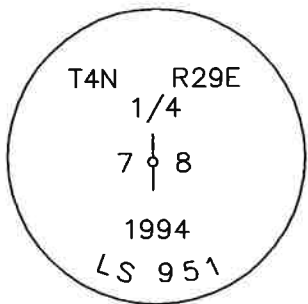
ORIGINALLY SURVEYED IN 1861 BY DAVENPORT UNDER CONTRACT #101. HE SET A POST IN A MOUND OF EARTH AND A CHARRED STAKE.  
 IN 1994 EDWARDS SET A 1" x 30" IRON PIPE WITH A 2 3/8" BC STAMPED AS BELOW BY SINGLE PROPORTION.

MONUMENTS AND ACCESSORIES FOUND: CONDITION AND SOURCE

A 1 1/4" WASHER #951 GLUED TO SE COR. OF BRIDGE ABUTMENT LIES N 2°47'09" E, 161.14 FEET.  
 A 2 3/8" BC STAMPED AS BELOW.

MONUMENT DETAIL

SKETCH

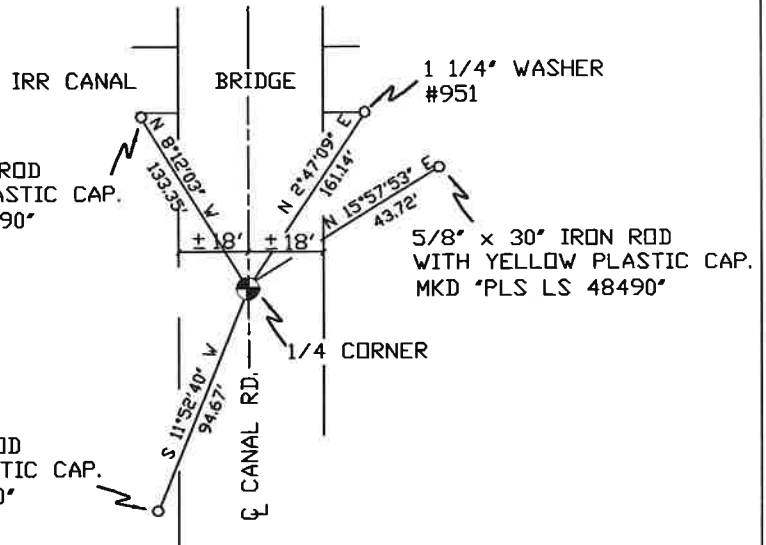


NAD 83/91  
 OREGON STATE PLANE  
 INTERNATIONAL FEET

795701.89  
 8526836.46

5/8" x 30" IRON ROD  
 WITH YELLOW PLASTIC CAP.  
 MKD "PLS LS 48490"

5/8" x 30" IRON ROD  
 WITH YELLOW PLASTIC CAP.  
 MKD "PLS LS 48490"



MONUMENT SET ( PROCEDURES AND DESCRIPTION )

NEW ACCESSORIES FROM WHICH

A 5/8" x 30" IRON ROD WITH A YELLOW PLASTIC CAP MKD "PLS LS 48490" LIES N 8°12'03" W, 133.35 FEET.  
 A 5/8" x 30" IRON ROD WITH A YELLOW PLASTIC CAP MKD "PLS LS 48490" LIES S 11°52'40" W, 94.67 FEET.  
 A 5/8" x 30" IRON ROD WITH A YELLOW PLASTIC CAP MKD "PLS LS 48490" LIES N 15°57'53" E, 43.72 FEET.

LOCATION AND COMMENTS

FROM INTERSECTION OF HIGHLAND EXT. AND CANAL RD. GO NORTH ON CANAL 1/2 MILE TO CORNER.

COMPASS DEC.

FIRM/AGENCY  
 PRIMM LAND SURVEYING  
 P.O. BOX 1322  
 HERMISTON, OREGON 97838

PARTY CHIEF  
 BRIT L. PRIMM

NOTES

WITNESS  
 KEITH P. PRIMM

SURVEYOR'S SEAL

REGISTERED  
 PROFESSIONAL  
 LAND SURVEYOR

*Keith P. Primm*  
 OREGON  
 JULY 12, 2005  
 KEITH P. PRIMM  
 48490

EXPIRATION DATE: 12/31/20

IAA

21-004-C

01 DEC 20