

OREGON CORNER RESTORATION FORM

SECTION 7,12 TOWNSHIP 4 NORTH RANGE 29,30 EAST

G-25

COUNTY : UMATILLA DATE MAY/20

CORNER DESIGNATION

1/4 CORNER

- CONDITION REPORT ONLY
- NOT FOUND
- RENEWED
- UNCOVERED
- SURVEYED IN
- REFERENCED

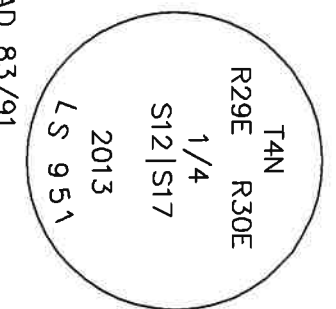
PREVIOUS RENEWALS / SURVEYS, ETC.

ORIGINALLY SURVEYED IN 1860 BY CAMPBELL UNDER CONTRACT #95. HE SET A CHARRED STAKE WITH RAISED MOUND OF EARTH AND PITS. EDWARDS SET A 2 3/8" BC IN 2013.

MONUMENTS AND ACCESSORIES FOUND: CONDITION AND SOURCE

- A 1 1/2" IRON PIPE LIES S 73°03'13" W, 23.04 FEET.
- A 5/8" IRON ROD WITH A PLASTIC CAP #951" LIES N 24°16'48" W, 50.45 FEET.
- A 5/8" IRON ROD WITH A PLASTIC CAP #951" LIES S 65°22'34" E, 75.75 FEET.
- A 5/8" IRON ROD WITH A PLASTIC CAP #951" LIES S 5°35'10" W, 24.94 FEET.
- A 2 3/8" BC STAMPED AS BELOW.

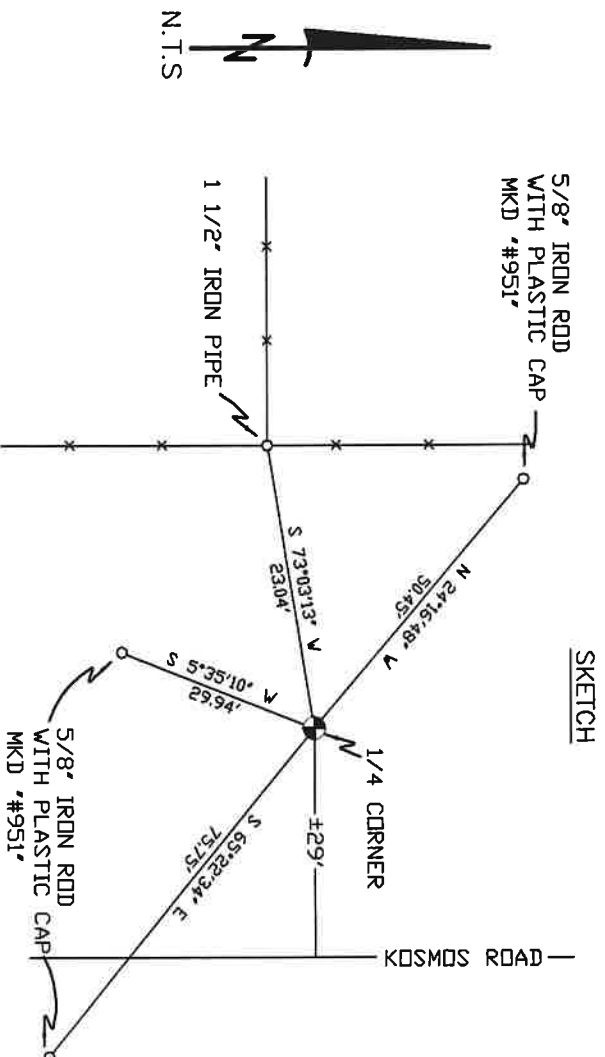
MONUMENT DETAIL



NAD 83/91
OREGON STATE PLANE
INTERNATIONAL FEET

796281.17
8553256.80

MONUMENT SET (PROCEDURES AND DESCRIPTION)



NEW ACCESSORIES FROM WHICH

LOCATION AND COMMENTS

FROM INTERSECTION OF LOOP RD. AND KOSMOS RD., GO EAST ON KOSMOS RD. 1.5 MILES THEN GO NORTH ON KOSMOS RD. 0.5 MILES CORNER IS 30' WEST OF CENTERLINE.

COMPASS DEC.

SURVEYOR'S SEAL

FIRM/AGENCY
PRIMM LAND SURVEYING
P.O. BOX 1322
HERMISTON, OREGON 97838

REGISTERED
PROFESSIONAL
LAND SURVEYOR

PARTY CHIEF
PAUL P. PILCH

OREGON
JULY 12, 2005
KEITH P. PRIMM
48490

NOTES

WITNESS
KEITH P. PRIMM

EXPIRATION DATE: 12/31/20

~~714~~ 21-004-c

Φ 1 DEC 20