

# OREGON CORNER RESTORATION FORM

SECTION 9,10 TOWNSHIP 4 NORTH RANGE 29 EAST

G-13

COUNTY : UMATILLA DATE 02/02

CORNER DESIGNATION

1/4 CORNER

CONDITION REPORT ONLY

NOT FOUND

RENEWED

UNCOVERED

SURVEYED IN

REFERENCED

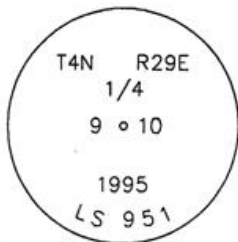
PREVIOUS RENEWALS / SURVEYS, ETC.

ORIGINALLY SURVEYED IN 1861 BY DAVENPORT UNDER CONTRACT #101. HE SET A POST IN A MOUND OF EARTH AND A CHARRED STAKE.  
 IN 1995 EDWARDS SET A 1" x 30" IRON PIPE WITH A 2 3/8" BRASS CAP STAMPED AS BELOW 20" BELOW SURFACE IN CULTIVATED FIELD BY SINGLE PROPORTION.

MONUMENTS AND ACCESSORIES FOUND: CONDITION AND SOURCE

AN ALUMINUM TAG #951 ON A POWER POLE LIES N 5°51'54" E, 184.98 FEET.  
 AN ALUMINUM TAG #951 ON A POWER POLE LIES S 6°49'56" E, 170.04 FEET.  
 A 5/8" IRON ROD WITH A YELLOW PLASTIC CAP MKD "#951" 6" BELOW SURFACE LIES N 89°21'29" E, 18.05 FEET.  
 A 1/2" IRON ROD WITH A YELLOW PLASTIC CAP MKD "#951" 15" BELOW SURFACE LIES N 89°58'25" W, 11.22 FEET.

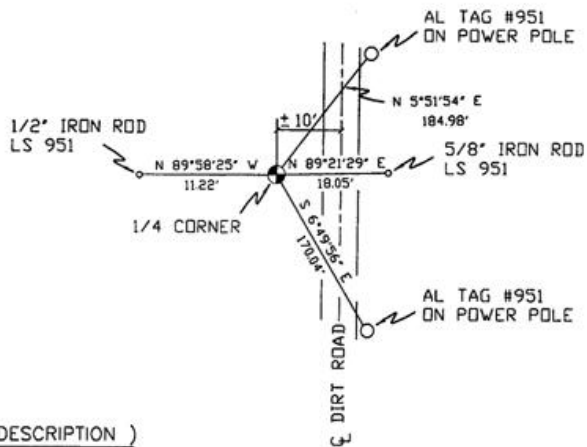
MONUMENT DETAIL



NAD 83/91  
 OREGON STATE PLANE  
 INTERNATIONAL FEET

795974.3481  
 8537370.8058

SKETCH



MONUMENT SET ( PROCEDURES AND DESCRIPTION )

NEW ACCESSORIES FROM WHICH

LOCATION AND COMMENTS

FROM INTERSECTION OF EDWARDS RD. AND HIGHLAND EXT. GO EAST ON HIGHLAND 1 MILE TO POWER LINE, THEN 1/2 MILE NORTH ALONG SAID POWER LINE TO CORNER.

COMPASS DEC.

FIRM/AGENCY  
 PRIMM LAND SURVEYING  
 P.O. BOX 1322  
 HERMISTON, OREGON 97838

PARTY CHIEF  
 KEITH P. PRIMM

NOTES

WITNESS  
 BRIT L. PRIMM

SURVEYOR'S SEAL

REGISTERED  
 PROFESSIONAL  
 LAND SURVEYOR

*Brit L. Primm*

OREGON  
 JULY 13, 1999  
 BRIT L. PRIMM  
 48509

EXPIRATION DATE: 12/31/02

03-52-9