

# OREGON CORNER RESTORATION FORM

SECTION 4,5,8,9 TOWNSHIP 4 NORTH RANGE 29 EAST  
 COUNTY : UMATILLA DATE MAY/20

E-9

CORNER DESIGNATION

SECTION CORNER

- CONDITION REPORT ONLY
- NOT FOUND
- RENEWED
- UNCOVERED
- SURVEYED IN
- REFERENCED

PREVIOUS RENEWALS / SURVEYS, ETC.

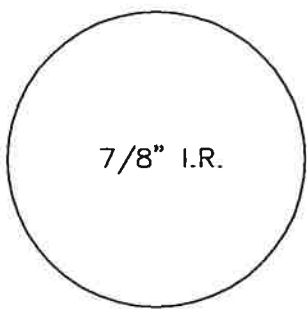
ORIGINALLY SURVEYED IN 1861 BY DAVENPORT UNDER CONTRACT #101. HE SET A POST IN A MOUND OF EARTH AND A CHARRED STAKE.  
 PALMER SET A 5/8" IRON ROD IN 1976.  
 CRAMER SET A 7/8" IRON ROD IN 1986.

MONUMENTS AND ACCESSORIES FOUND: CONDITION AND SOURCE

AN ALUMINUM TAG #951 ON A POWER POLE LIES S 89°29'02" W, 328.73 FEET.  
 AN ALUMINUM TAG #951 ON A POWER POLE LIES S 87°42'51" E, 38.52 FEET.  
 AN ALUMINUM TAG #951 ON A POWER POLE LIES N 10°53'57" W, 125.09 FEET.  
 5/8" IRON ROD LIES N 89°58'01" E, 10.25 FEET.  
 A 7/8" IRON ROD AS BELOW

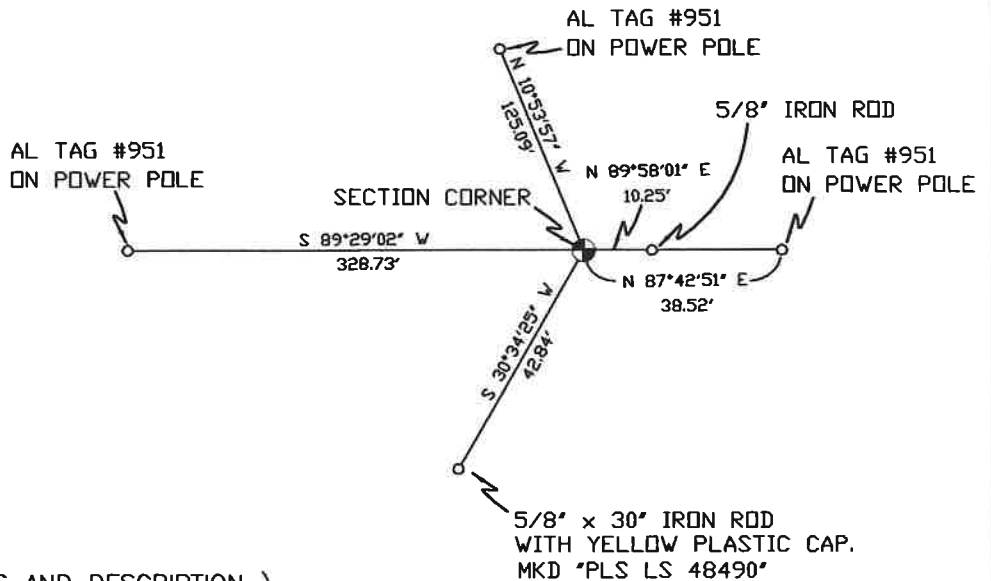
MONUMENT DETAIL

SKETCH



NAD 83/91  
 OREGON STATE PLANE  
 INTERNATIONAL FEET

798486.26  
 8532125.62



MONUMENT SET ( PROCEDURES AND DESCRIPTION )

NEW ACCESSORIES FROM WHICH

A 5/8" x 30" IRON ROD WITH A YELLOW PLASTIC CAP MKD "PLS LS 48490" LIES S 30°34'25" W, 42.84 FEET

LOCATION AND COMMENTS

FROM INTERSECTION OF PUNKIN CENTER RD. AND EDWARDS RD. GO SOUTH ON EDWARDS RD. 1 MILE TO CORNER.

COMPASS DEC.

FIRM/AGENCY  
 PRIMM LAND SURVEYING  
 P.O. BOX 1322  
 HERMISTON, OREGON 97838

PARTY CHIEF  
 KEITH P. PRIMM

NOTES

WITNESS  
 KEITH P. PRIMM

SURVEYOR'S SEAL

REGISTERED  
 PROFESSIONAL  
 LAND SURVEYOR

*Keith P. Primm*  
 OREGON  
 JULY 12, 2005  
 KEITH P. PRIMM  
 48490

EXPIRATION DATE: 12/31/20

*7mb* 21-004-C

Ø1 DEC 20