

OREGON CORNER RESTORATION FORM

SECTION 5,8 TOWNSHIP 4 NORTH RANGE 29 EAST
 COUNTY : UMATILLA DATE MAY/20

E-7

CORNER DESIGNATION

1/4 CORNER

CONDITION REPORT ONLY
 NOT FOUND
 RENEWED
 UNCOVERED
 SURVEYED IN
 REFERENCED

PREVIOUS RENEWALS / SURVEYS, ETC.

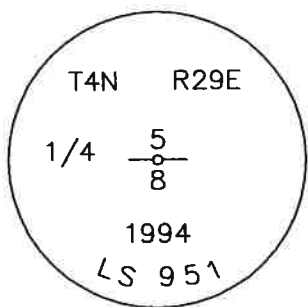
ORIGINALLY SURVEYED IN 1861 BY DAVENPORT UNDER CONTRACT #101. HE SET A POST IN A MOUND OF EARTH AND A CHARRED STAKE.
 KIMBRELL SET AN IRON PIPE IN 1910.
 CRAMER SET A 1 1/4" IRON PIPE IN 1986.
 IN 1994 EDWARDS SET A 1" x 30" IRON PIPE WITH A 2 3/8" BC STAMPED AS BELOW, 14" BELOW SURFACE OF CULTIVATED FIELD.

MONUMENTS AND ACCESSORIES FOUND: CONDITION AND SOURCE

A 2 3/8" BRASS CAP STAMPED AS BELOW LIES S 82°26'34" W, 14.28 FEET.
 AN ALUMINUM TAG #951 ON A POWER POLE LIES S 85°49'11" E, 20.72 FEET.
 A 5/8" BOLT WITH A 1" NUT LIES S 11°05'42" W, 9.41 FEET.
 AN ALUMINUM TAG #48509 ON A POWER POLE LIES S 89°21'09" W, 443.72 FEET.
 A 2 3/8" BC STAMPED AS BELOW.

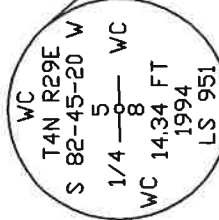
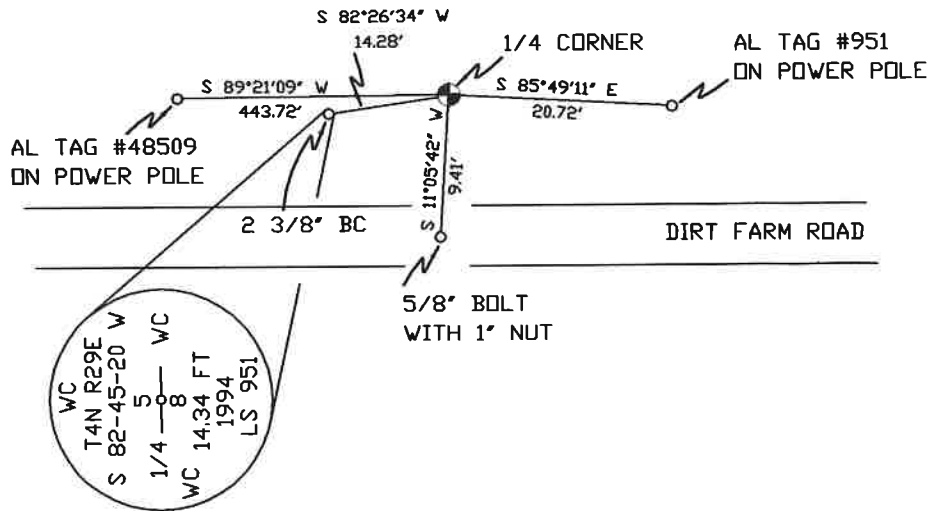
MONUMENT DETAIL

SKETCH



NAD 83/91
 OREGON STATE PLANE
 INTERNATIONAL FEET

798418.64
 8529461.84



MONUMENT SET (PROCEDURES AND DESCRIPTION)

NEW ACCESSORIES FROM WHICH

LOCATION AND COMMENTS

FROM INTERSECTION OF PUNKIN CENTER RD. WITH EDWARDS RD. GO SOUTH ON EDWARDS 1 MILE THEN WEST 1/2 MILE ON DIRT FARM RD. TO CORNER.

COMPASS DEC.

FIRM/AGENCY
 PRIMM LAND SURVEYING
 P.O. BOX 1322
 HERMISTON, OREGON 97838

PARTY CHIEF
 PAUL P. PILCH

NOTES

WITNESS
 KEITH P. PRIMM

SURVEYOR'S SEAL

REGISTERED
 PROFESSIONAL
 LAND SURVEYOR

Keith P. Primm
 OREGON
 JULY 12, 2005
 KEITH P. PRIMM
 48490

EXPIRATION DATE: 12/31/20

ZAA

21-004-C

01 DEC 20