

# OREGON CORNER RESTORATION FORM

SECTION 5,8 TOWNSHIP 4 NORTH RANGE 29 EAST

E-7

COUNTY : UMATILLA DATE 02/02

CORNER DESIGNATION

1/4 CORNER

- CONDITION REPORT ONLY
- NOT FOUND
- RENEWED
- UNCOVERED
- SURVEYED IN
- REFERENCED

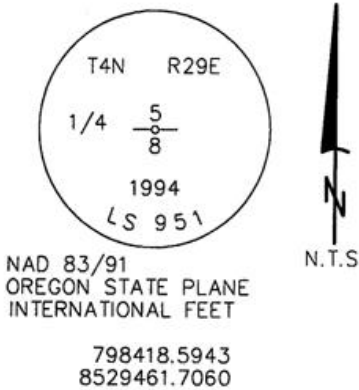
PREVIOUS RENEWALS / SURVEYS, ETC.

ORIGINALLY SURVEYED IN 1861 BY DAVENPORT UNDER CONTRACT #101. HE SET A POST IN A MOUND OF EARTH AND A CHARRED STAKE.  
 KIMBRELL SET AN IRON PIPE IN 1910.  
 CRAMER SET A 1 1/4" IRON PIPE IN 1986.  
 IN 1994 EDWARDS SET A 1" x 30" IRON PIPE WITH A 2 3/8" BRASS CAP STAMPED AS BELOW, 14" BELOW SURFACE OF CULTIVATED FIELD.

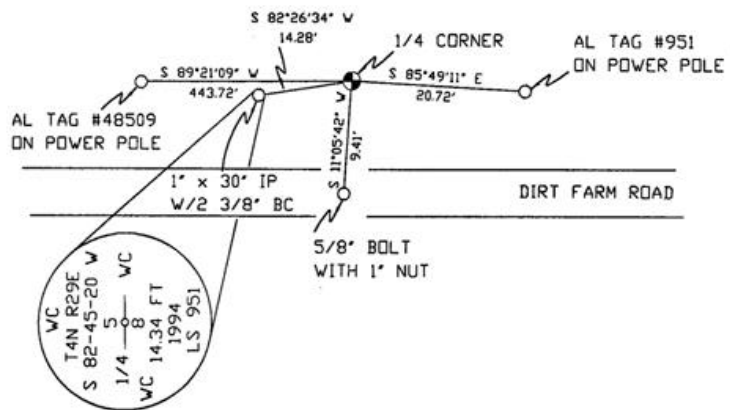
MONUMENTS AND ACCESSORIES FOUND: CONDITION AND SOURCE

A 2 3/8" BRASS CAP STAMPED AS BELOW LIES S 82°26'34" W, 14.28 FEET.  
 AN ALUMINUM TAG #951 ON A POWER POLE LIES S 85°49'11" E, 20.72 FEET.  
 A 5/8" x 29" BOLT WITH A 1" NUT LIES S 11°05'42" W, 9.41 FEET.

MONUMENT DETAIL



SKETCH



MONUMENT SET ( PROCEDURES AND DESCRIPTION )

NEW ACCESSORIES FROM WHICH

AN ALUMINUM TAG #48509 ON A POWER POLE LIES S 89°21'09" W, 443.72 FEET.

LOCATION AND COMMENTS

FROM INTERSECTION OF PUNKIN CENTER RD. WITH EDWARDS RD. GO SOUTH ON EDWARDS 1 MILE THEN WEST 1/2 MILE ON DIRT FARM ROAD TO CORNER.

COMPASS DEC.

FIRM/AGENCY  
 PRIMM LAND SURVEYING  
 P.O. BOX 1322  
 HERMISTON, OREGON 97838

PARTY CHIEF  
 KEITH P. PRIMM

NOTES

WITNESS  
 BRIT L. PRIMM

SURVEYOR'S SEAL

REGISTERED  
 PROFESSIONAL  
 LAND SURVEYOR

*Brit L. Primm*  
 OREGON  
 JULY 13, 1999  
 BRIT L. PRIMM  
 48509

EXPIRATION DATE: 12/31/02

03-52-9