

OREGON CORNER RESTORATION FORM

Section 7 Township 4 N Range 29 E

E-5

County UMATILLA Date 3/95

CORNER DESIGNATION

NE Cor.

- Condition Report Only
- Not Found
- Renewed
- Unrecorded
- Surveyed In
- Referenced Out

Previous Renewals/Surveys, etc. ORIG SUR. DAVENPORT 1861 # 101

He set a post in mound with charred stake

Krumbein? Set B.C. 1979 ± / Kimbrell set I.P. pipe in 1910 82, p. 152
Cramer set 1" x 30" I.P. pipe in center Kimbrell in 1987

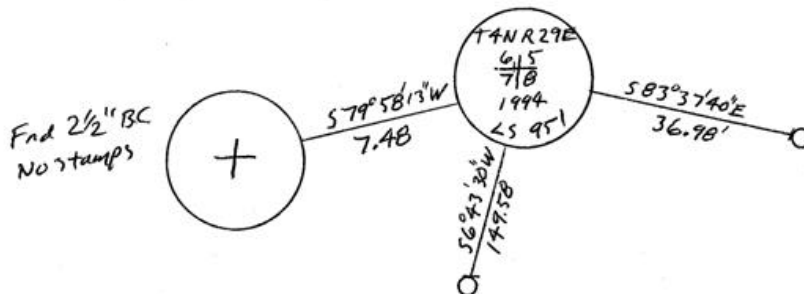
Monument(s) & Accessories Found: (Condition and Source)

End 1" Iron Bar over Cramer 1" I.P. pipe over Kimbrell's 1/2" I.P. pipe

End 2 1/2" B.C. No stamp S 79° 58' 13" W 7.48 Ft.

Monument Detail

Sketch



Monument Set (Procedures and Description)

In place of Cramer & Kimbrell I. Pipes I set 1" x 30" I. Pipe with 2 3/8" B.C. stamped as above. Buried 1" I. Bar & 1" I. Pipe & 1/2" I. Pipe along side

SEE MY 1992-1 COUNTY PUBLIC MONUMENTATION SUR.

New Accessories

Alum. Tag # 951 in P. Pole Bears S 6° 43' 30" W 149.58 FT.

" " " " " " S 79° 58' 13" W 17.53 FT.

" " " " " " S 83° 37' 40" E 36.98 FT.

" " " " R.R. Tie F. Post " N 0° 49' E 53.32 FT.

Location & Comments

From Intersection

Baxter Rd & Canal Rd

go South 1/2 mile

on Canal to Cor.

Compass Declination

Firm/Agency EDWARDS

SURVEYING

Address P. Box 763

HERMISTON, OR 97838

Party Chief D. EDWARDS

Notes

Witness J. COPPOCK

Surveyor's Seal

REGISTERED PROFESSIONAL LAND SURVEYOR

G. Dennis Edwards

OREGON JULY 16, 1971 G. DENNIS EDWARDS 951

RENEWS 12/31/95

RECEIVED BY

Umatilla County Surveyor

Date

Rec'd By

No. 95-59-B