

OREGON CORNER RESTORATION FORM

SECTION: 11 TOWNSHIP: 4N

RANGE: 29E

E-19

COUNTY: UMATILLA

DATE: 9/2013

CORNER DESIGNATION

N 1/4

 CONDITION REPORT ONLY
 NOT FOUND
 RENEWED
 UNRECORDED
 X **SURVEYED IN**
 X **REFERENCED OUT**

PREVIOUS RENEWALS/SURVEYS ETC.

Originally surveyed by Davenport under Contract #101 in 1861. He set a post in mound with charred stake.

In 1934 U.S. Department of agriculture must have done a survey for which I could find no record.

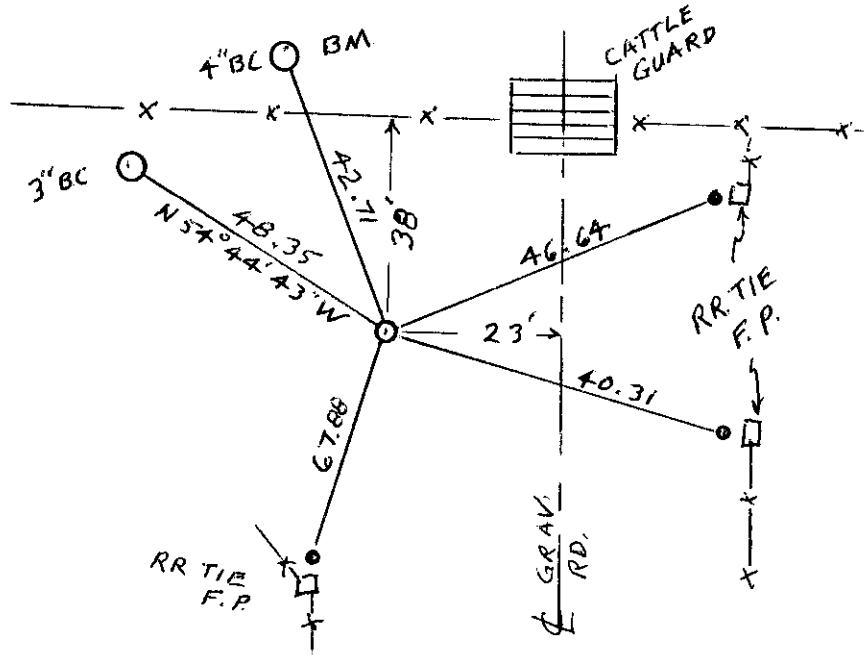
MONUMENTS AND ACCESSORIES FOUND: CONDITON AND SOURCE

Found 3" brass cap on a 3" concrete post stamped as below with 1934 U.S. Dep. of Agr. It lies 48' NW of corner and the numbers are oriented to the northeast which indicates it was probably moved from its original location. It is also about 12" above the ground. I did not use.

MONUMENT DETAIL

T4N R29E
S2
1/4
S11
2013
LS 951

NAD 83/91
OREGON STATE PLANE
INTERNATIONAL FEET
798797.40
8545273.79



MONUMENT SET (PROCEDURES AND DESCRIPTION)

By single proportion I set a 1" x 30" iron pipe with a 2 1/2" brass cap at the surface and placed some stones around

NEW ACCESSORIES FROM WHICH

- A 3" brass cap on a 3" conc. post about 12" above the surface bears N 54° 44' 43" W 48.35'
- A 4" brass cap in concrete stamped BM 1960 bears N 19° 08' 30" W 42.71'
- A 5/8" x 30" Iron Rebar with plastic cap #951 bears N 56° 38' 12" E 46.64'
- A 5/8" x 30" Iron Rebar with plastic cap #951 bears S 74° 29' 44" E 40.31'
- A 5/8" x 30" Iron Rebar with plastic cap #951 bears S 1° 59' 31" W 67.88'

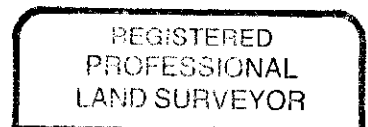
LOCATION AND COMMENTS

From the most northeasterly corner of Loop Road go north 0.25 mile to corner at the south entrance to the Cold Springs Wildlife Refuge. It lies 23 feet west of the centerline of a graveled road.

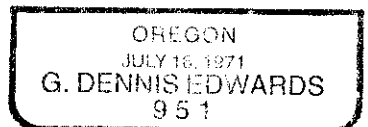
**FIRM: EDWARDS SURVEYING LLC
PO BOX 763 - HERMISTON OR 97838**

**PARTY CHIEF: G. EDWARDS
WITNESS: R. FRITZ**

SURVEYOR'S SEAL



G. Dennis Edwards



RENEWS 12/31/13

13-532-C