

OREGON CORNER RESTORATION FORM

SECTION 3,10 TOWNSHIP 4 NORTH RANGE 29 EAST
 COUNTY : UMATILLA DATE MAY/20

E-15

CORNER DESIGNATION

1/4 CORNER

- CONDITION REPORT ONLY
- NOT FOUND
- RENEWED
- UNCOVERED
- SURVEYED IN
- REFERENCED

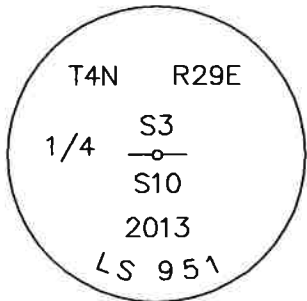
PREVIOUS RENEWALS / SURVEYS, ETC.

ORIGINALLY SURVEYED IN 1861 BY DAVENPORT UNDER CONTRACT #101. HE SET A POST IN A MOUND OF EARTH AND A CHARRED STAKE.
 EDWARDS SET A 2 3/8" BC IN 2013.

MONUMENTS AND ACCESSORIES FOUND: CONDITION AND SOURCE

- A 5/8" IRON ROD WITH A PLASTIC CAP "#951" LIES N 88°12'49" W, 24.29 FEET.
- A 5/8" IRON ROD WITH A PLASTIC CAP "#951" LIES N 40°54'32" W, 35.19 FEET.
- A 5/8" IRON ROD WITH A PLASTIC CAP "#951" LIES N 16°23'01" W, 28.31 FEET.
- A 5/8" IRON ROD WITH A PLASTIC CAP "#951" LIES N 61°07'45" E, 57.30 FEET.
- A 2 3/8" BC STAMPED AS BELOW.

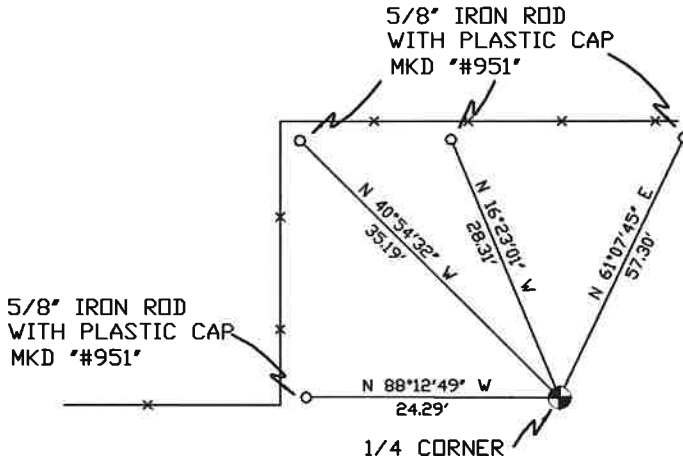
MONUMENT DETAIL



NAD 83/91
 OREGON STATE PLANE
 INTERNATIONAL FEET

798683.04
 8539990.91

SKETCH



MONUMENT SET (PROCEDURES AND DESCRIPTION)

NEW ACCESSORIES FROM WHICH

LOCATION AND COMMENTS

FROM THE MOST NORTHEASTERLY CORNER OF LOOP RD. GO WEST 0.85 MILES TO A FENCE CORNER THEN GO NORTH 0.25 MILES TO A FENCE CORNER THEN GO 0.15 MILES ALONG FENCE TO CORNER.

COMPASS DEC.

FIRM/AGENCY
 PRIMM LAND SURVEYING
 P.O. BOX 1322
 HERMISTON, OREGON 97838

PARTY CHIEF
 KEITH P. PRIMM

NOTES

WITNESS
 KEITH P. PRIMM

SURVEYOR'S SEAL

REGISTERED
 PROFESSIONAL
 LAND SURVEYOR

Keith P. Primm

OREGON
 JULY 12, 2005
 KEITH P. PRIMM
 48490

EXPIRATION DATE: 12/31/20

TAAA

21-004-C

01 DEC 20