

OREGON CORNER RESTORATION FORM

SECTION: 10 TOWNSHIP: 4N

RANGE: 29E

E-15

COUNTY: UMATILLA

DATE: 9/2013

CORNER DESIGNATION

N 1/4 COR.

- CONDITION REPORT ONLY**
- NOT FOUND**
- RENEWED**
- UNRECORDED**
- SURVEYED IN**
- REFERENCED OUT**

PREVIOUS RENEWALS/SURVEYS ETC.

Originally surveyed by Davenport under Contract #101 in 1861. He set a post in mound with charred stake.

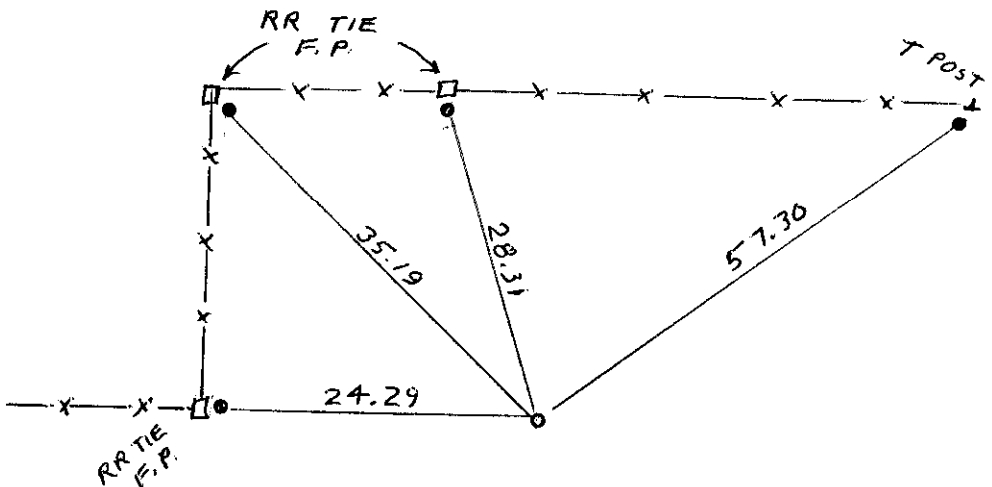
MONUMENTS AND ACCESSORIES FOUND: CONDITON AND SOURCE

Nothing found.

MONUMENT DETAIL

T4N R29E
 S3
 1/4
 S10
 2013
 LS 951

NAD 83/91
 OREGON STATE PLANE
 INTERNATIONAL FEET
 798683.10
 8539990.86



MONUMENT SET (PROCEDURES AND DESCRIPTION)

By single proportion I set a 1" x 15" iron pipe with a 2 1/2" brass cap stamped as above in concrete 24" below the surface of a cultivated field.

NEW ACCESSORIES FROM WHICH

- A 5/8" x 30" Iron Rebar with plastic cap #951 bears N 88° 12' 49" W 24.29'
- A 5/8" x 30" Iron Rebar with plastic cap #951 bears N 40° 54' 32" W 35.19'
- A 5/8" x 30" Iron Rebar with plastic cap #951 bears N 16° 23' 01" W 28.31'
- A 5/8" x 30" Iron Rebar with plastic cap #951 bears N 61° 07' 45" E 57.30'

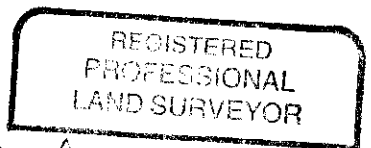
LOCATION AND COMMENTS

From the most northeasterly corner of Loop Road go West 0.85 mile to a fence corner. Go North along a fence line 0.25 to fence corner. Then go West 0.15 mile along a fence to corner at a jog in fence.

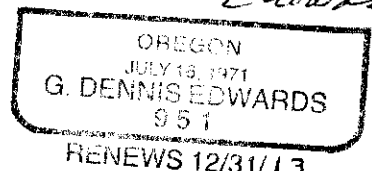
FIRM: EDWARDS SURVEYING LLC
 PO BOX 763 - HERMISTON OR 97838

PARTY CHIEF: G. EDWARDS
 WITNESS: R. FRITZ

SURVEYOR'S SEAL



G. Dennis Edwards



RENEWS 12/31/13

13-532-C