

# OREGON CORNER RESTORATION FORM

SECTION 4,3,10,9 TOWNSHIP 4 NORTH RANGE 29 EAST  
 COUNTY : UMATILLA DATE MAY/20

E-13

CORNER DESIGNATION

SECTION CORNER

- CONDITION REPORT ONLY
- NOT FOUND
- RENEWED
- UNCOVERED
- SURVEYED IN
- REFERENCED

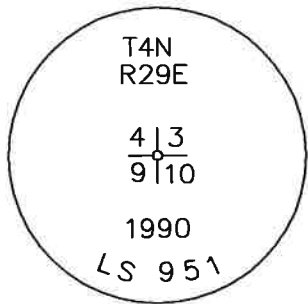
PREVIOUS RENEWALS / SURVEYS, ETC.

ORIGINALLY SURVEYED IN 1861 BY DAVENPORT UNDER CONTRACT #101. HE SET A POST IN A MOUND OF EARTH WITH A CHARRED STAKE.  
 IN 1990 EDWARDS Poured AN 8" CYLINDER OF CONCRETE 8" DEEP OVER IRON PIPE AND PLACED A 3" BRASS DISC OVER IT.

MONUMENTS AND ACCESSORIES FOUND: CONDITION AND SOURCE

AN ALUMINUM BT TAG ON A POWER POLE LIES S 6°04'30" W, 20.00 FEET.  
 AN ALUMINUM TAG #951 ON A POWER POLE LIES N 0°16'20" W, 179.15 FEET.  
 AN ALUMINUM TAG #951 ON A BRACE POLE LIES S 40°45'00" E, 27.17 FEET.  
 A 5/8" IRON ROD WITH A YELLOW PLASTIC CAP MKD "PLS LS 48509" LIES N 70°42'15" E, 26.19 FEET.  
 A 3" BC STAMPED AS BELOW.

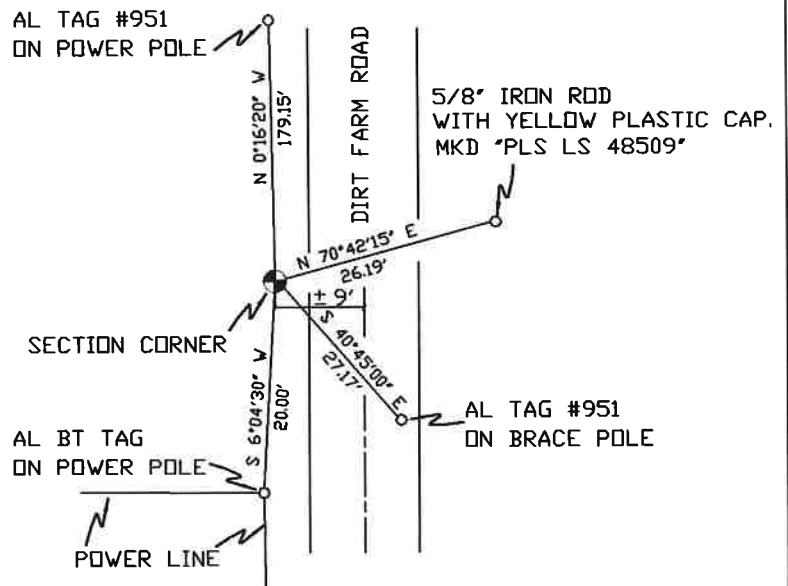
MONUMENT DETAIL



NAD 83/91  
 OREGON STATE PLANE  
 INTERNATIONAL FEET

798618.99  
 8537342.19

SKETCH



MONUMENT SET ( PROCEDURES AND DESCRIPTION )

NEW ACCESSORIES FROM WHICH

LOCATION AND COMMENTS

FROM INTERSECTION OF LOOP RD. AND EDWARDS RD., GO EAST ON LOOP RD. 1 MILE TO A DIRT RD. GO NORTH 1/4 MILE ON DIRT RD. TO CORNER.

COMPASS DEC.

FIRM/AGENCY  
 PRIMM LAND SURVEYING  
 P.O. BOX 1322  
 HERMISTON, OREGON 97838

PARTY CHIEF  
 KEITH P. PRIMM

NOTES

WITNESS  
 KEITH P. PRIMM

SURVEYOR'S SEAL

REGISTERED  
 PROFESSIONAL  
 LAND SURVEYOR

*Keith P. Primm*  
 OREGON  
 JULY 12, 2005  
 KEITH P. PRIMM  
 48490

EXPIRATION DATE: 12/31/20

*Ima* 21-004-c

01 DEC 20