

OREGON CORNER RESTORATION FORM

SECTION 4,3,10,9 TOWNSHIP 4 NORTH RANGE 29 EAST E-13

COUNTY : UMATILLA DATE 02/02

CORNER DESIGNATION

SECTION CORNER

- CONDITION REPORT ONLY
- NOT FOUND
- RENEWED
- UNCOVERED
- SURVEYED IN
- REFERENCED

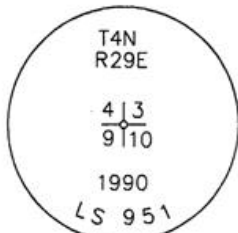
PREVIOUS RENEWALS / SURVEYS, ETC.

ORIGINALLY SURVEYED IN 1861 BY DAVENPORT UNDER CONTRACT #101. HE SET A POST.
IN 1990 EDWARDS POURED AN 8" CYLINDER OF CONCRETE 8" DEEP OVER IRON PIPE AND PLACED A 3" BRASS DISC OVER IT.

MONUMENTS AND ACCESSORIES FOUND: CONDITION AND SOURCE

AN ALUMINUM BT TAG ON A POWER POLE LIES S 6°04'30" W, 20.00 FEET.
AN ALUMINUM TAG #951 ON A POWER POLE LIES N 0°16'20" W, 179.15 FEET.
AN ALUMINUM TAG #951 ON A BRACE POLE LIES S 40°45'00" E, 27.17 FEET.

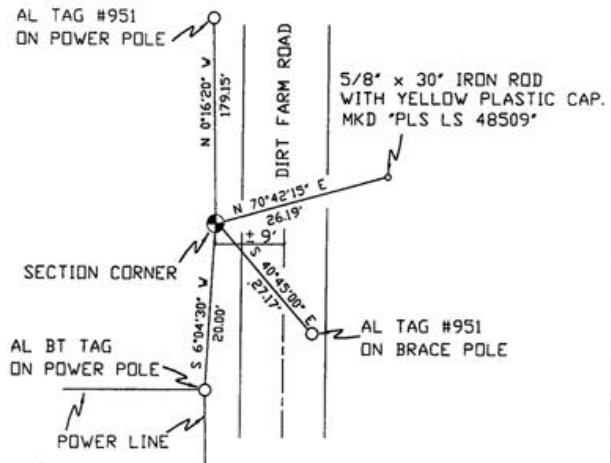
MONUMENT DETAIL



NAD 83/91
OREGON STATE PLANE
INTERNATIONAL FEET

798618.8835
8537342.0775

SKETCH



MONUMENT SET (PROCEDURES AND DESCRIPTION)

NEW ACCESSORIES FROM WHICH

A 5/8" x 30" IRON ROD WITH A YELLOW PLASTIC CAP MKD "PLS LS 48509" LIES N 70°42'15" E, 26.19 FEET.

LOCATION AND COMMENTS

FROM INTERSECTION OF LOOP ROAD AND EDWARDS ROAD, GO EAST ON LOOP ROAD 1 MILE TO A DIRT ROAD GO NORTH 1/4 MILE ON DIRT ROAD TO CORNER.

COMPASS DEC.

FIRM/AGENCY
PRIMM LAND SURVEYING
P.O. BOX 1322
HERMISTON, OREGON 97838

PARTY CHIEF
KEITH P. PRIMM

NOTES

WITNESS
BRIT L. PRIMM

SURVEYOR'S SEAL

REGISTERED
PROFESSIONAL
LAND SURVEYOR

Brit L. Primm

OREGON
JULY 13, 1999
BRIT L. PRIMM
48509

EXPIRATION DATE: 12/31/02

03-52-9