

OREGON CORNER RESTORATION FORM

SECTION 4,5 TOWNSHIP 4,5 NORTH RANGE 29 EAST
 COUNTY : UMATILLA DATE MAY/20

C-9 WC

CORNER DESIGNATION

1/4 CORNER

CONDITION REPORT ONLY
 NOT FOUND
 RENEWED
 UNCOVERED
 SURVEYED IN
 REFERENCED

PREVIOUS RENEWALS / SURVEYS, ETC.

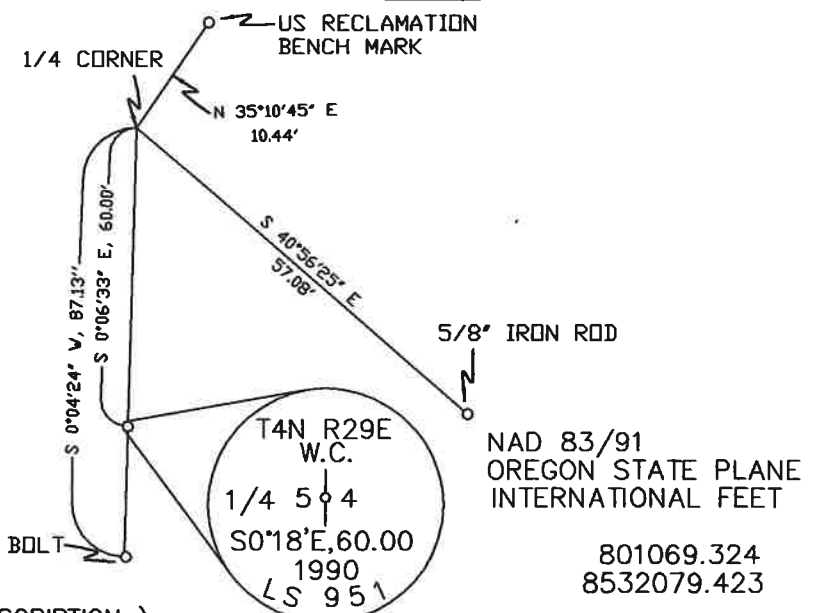
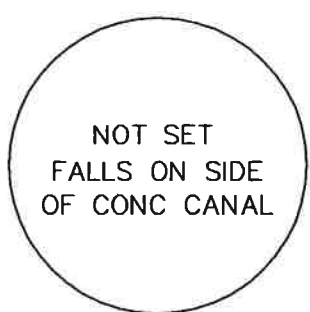
ORIGINALLY SURVEYED IN 1861 BY DAVENPORT UNDER CONTRACT #101, HE SET A POST IN A MOUND WITH A CHARRED STAKE.
 KIMBRELL SET AN IRON PIPE IN 1910 UNDER COUNTY CONTRACT #308.

MONUMENTS AND ACCESSORIES FOUND: CONDITION AND SOURCE

A 3/4" BOLT BEARS S 0°04'24" W, 87.13 FEET.
 A BRASS CAP WITNESS CORNER BEARS S 0°06'33" E, 60.00 FEET.
 A 5/8" IRON ROD BEARS S 40°56'25" E, 57.08 FEET.
 A U.S. RECLAMATION BENCH MARK, AL. CAP BEARS N 35°10'45" E, 10.44 FEET

MONUMENT DETAIL

SKETCH



MONUMENT SET (PROCEDURES AND DESCRIPTION)

NEW ACCESSORIES FROM WHICH

LOCATION AND COMMENTS

AT THE INTERSECTION OF EDWARDS RD. AND BAXTER RD.

COMPASS DEC.

FIRM/AGENCY
 PRIMM LAND SURVEYING
 P.O. BOX 1322
 HERMISTON, OREGON 97838

PARTY CHIEF
 PAUL P. PILCH

NOTES

WITNESS
 KEITH P. PRIMM

SURVEYOR'S SEAL

REGISTERED
 PROFESSIONAL
 LAND SURVEYOR

Keith P. Primm
 OREGON
 JULY 12, 2005
 KEITH P. PRIMM
 48490

EXPIRATION DATE: 12/31/20

JMA

21-004-C

01 DEC 20