

OREGON CORNER RESTORATION FORM

SECTION 4 TOWNSHIP 4N RANGE 29E C-9

COUNTY: UMATILLA DATE 9/90

CORNER DESIGNATION

West 1/4 Corner

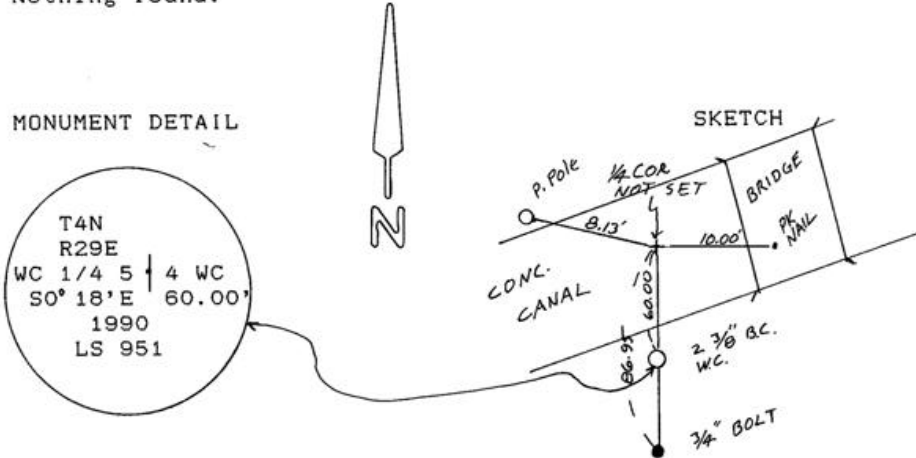
- CONDITION REPORT ONLY
- NOT FOUND
- RENEWED
- UNRECORDED
- SURVEYED IN
- REFERENCED OUT

PREVIOUS RENEWALS/SURVEYS, ETC.

Originally surveyed in 1861 by Davenport under Contract #101. He set post. Kimbrell set Iron pipe in 1910, County Survey #308.

MONUMENTS & ACCESSORIES FOUND: Condition and Source

Nothing found.



MONUMENT SET (PROCEDURES AND DESCRIPTION)

Corner falls in large canal full of water. Not set. Location of corner computed by single proportion in survey for Hellberg, County #

NEW ACCESSORIES

From which 1"x30" Iron pipe with 2 3/8" Brass Cap, stamped as above, Bears. SO° 18'E 60.00 feet, 3/4"x24" Bolt Bears. SO° 18'E 86.95 feet, Alum. tag #951 in power pole Bears. N77° 35'W 8.13 feet, PK nail in Bridge Bears. N89° E 10.00 feet.

Attached B.O. signs to P.Pole and a steel fence post by the B.C. W.C. Also a witness sign on fence post

LOCATION & COMMENTS

At intersection of Edwards Rd. and Baxter Rd.

COMPASS DEC. FIRM EDWARDS SURVEYING P.O. BOX 763, HERMISTON, OREGON, 97838 PARTY CHIEF D. EDWARDS NOTES

WITNESS J. COPPOCK

SURVEYOR'S SEAL

REGISTERED PROFESSIONAL LAND SURVEYOR

G. Dennis Edwards

OREGON JULY 16, 1971 G. DENNIS EDWARDS 951

RECEIVED BY

Umatilla County Surveyor Date 11-90 Rec'd by RA No. 90-077-B