

OREGON CORNER RESTORATION FORM

SECTION 4,5,32 TOWNSHIP 4,5 NORTH RANGE 29 EAST A-9

COUNTY : UMATILLA DATE 02/02

CORNER DESIGNATION

SECTION CORNER

- CONDITION REPORT ONLY
- NOT FOUND
- RENEWED
- UNCOVERED
- SURVEYED IN
- REFERENCED

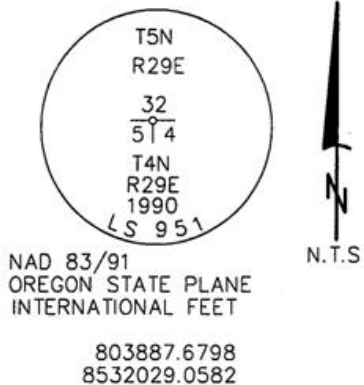
PREVIOUS RENEWALS / SURVEYS, ETC.

ORIGINALLY SURVEYED IN 1861 BY DAVENPORT UNDER CONTRACT #101. HE SET A POST.
 IN 1910 KIMBRELL SET AN IRON PIPE. SEE SURVEY#308.
 IN 1990 EDWARDS SET A 1' X 30" IRON PIPE WITH A 2 3/8" BRASS CAP FLUSH WITH PAVED SURFACE
 STAMPED AS BELOW BY SINGLE PROPORTION.

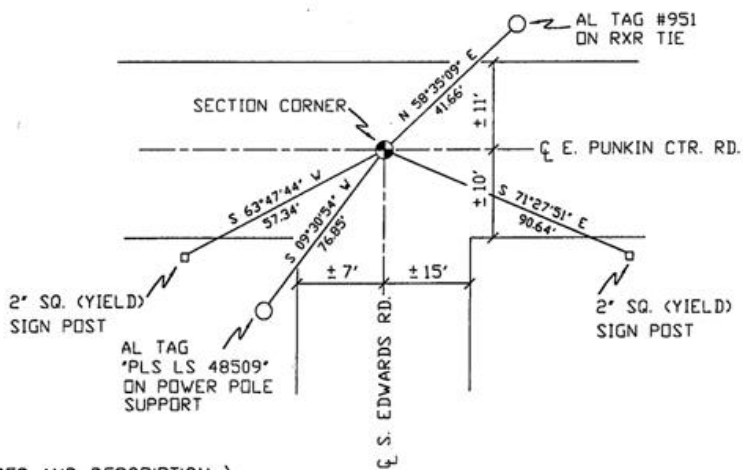
MONUMENTS AND ACCESSORIES FOUND: CONDITION AND SOURCE

AN ALUMINUM TAG #951 ON A RXR TIE FENCE POST LIES N 58°35'09" E, 41.66 FEET.
 A 2" SQUARE METAL (YIELD) SIGN POST LIES S 71°27'51" E, 90.64 FEET.

MONUMENT DETAIL



SKETCH



MONUMENT SET (PROCEDURES AND DESCRIPTION)

NEW ACCESSORIES FROM WHICH

A 1" x 1" ALUMINUM TAG MKD "PLS LS 48509" ON A POWER POLE SUPPORT LIES S 09°30'54" W, 76.85 FEET.
 A 2" SQUARE METAL (YIELD) SIGN POST LIES S 63°47'44" W, 57.34 FEET.

LOCATION AND COMMENTS

AT INTERSECTON OF S. EDWARDS ROAD AND E. PUNKIN CTR. ROAD.

COMPASS DEC.

FIRM/AGENCY
 PRIMM LAND SURVEYING
 P.O. BOX 1322
 HERMISTON, OREGON 97838

PARTY CHIEF
 KEITH P. PRIMM

NOTES

WITNESS
 BRIT L. PRIMM

SURVEYOR'S SEAL

REGISTERED
 PROFESSIONAL
 LAND SURVEYOR

BRIT L. PRIMM
 OREGON
 JULY 13, 1999
 BRIT L. PRIMM
 48509

EXPIRATION DATE:12/31/02

03-52-9