

OREGON CORNER RESTORATION FORM

SECTION 5.32 TOWNSHIP 4,5 NORTH RANGE 29 EAST A-7
 COUNTY : UMATILLA DATE 02/02

CORNER DESIGNATION

1/4 CORNER

- CONDITION REPORT ONLY
- NOT FOUND
- RENEWED
- UNCOVERED
- SURVEYED IN
- REFERENCED

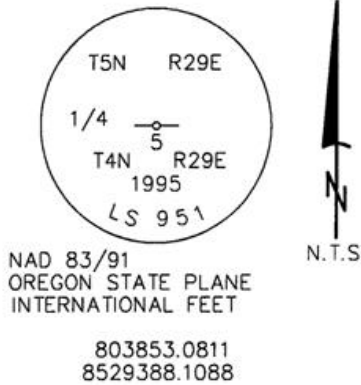
PREVIOUS RENEWALS / SURVEYS, ETC.

IN 1995 EDWARDS SET A 5/8" X 30" IRON ROD WITH A 2" ALUMINUM CAP FLUSH WITH PAVEMENT STAMPED AS BELOW, BY SINGLE PROPORTION.

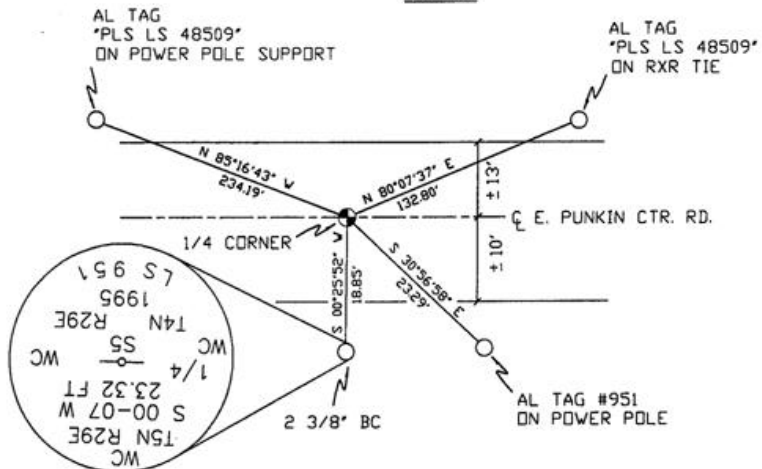
MONUMENTS AND ACCESSORIES FOUND: CONDITION AND SOURCE

AN ALUMINUM TAG #951 ON A POWER POLE LIES S 30°56'58" E, 23.29' FEET.
 A 2 3/8" BC STAMPED AS BELOW LIES S 00°25'52" W, 18.85 FEET.

MONUMENT DETAIL



SKETCH



MONUMENT SET (PROCEDURES AND DESCRIPTION)

NEW ACCESSORIES FROM WHICH

A 1" x 1" ALUMINUM TAG MKD "PLS LS 48509" ON A RXR TIE LIES N 80°07'37" E, 132.80 FEET.
 A 1" x 1" ALUMINUM TAG MKD "PLS LS 48509" ON A POWER POLE SUPPORT LIES N 85°16'43" W, 234.19 FEET.

LOCATION AND COMMENTS

FROM INTERSECTION OF CABANA RD. AND PUNKIN CTR. RD. GO WEST ON PUNKIN CTR. 450 FT TO CORNER.

COMPASS DEC.

FIRM/AGENCY
 PRIMM LAND SURVEYING
 P.O. BOX 1322
 HERMISTON, OREGON 97838

PARTY CHIEF
 KEITH P. PRIMM

NOTES

WITNESS
 BRIT L. PRIMM

SURVEYOR'S SEAL

REGISTERED
 PROFESSIONAL
 LAND SURVEYOR

Brit L. Primm

OREGON
 JULY 13, 1999
 BRIT L. PRIMM
 48509

EXPIRATION DATE:12/31/02

03-52-9