

# OREGON CORNER RESTORATION FORM

SECTION 6,31 TOWNSHIP 4,5 NORTH RANGE 29 EAST  
 COUNTY : UMATILLA DATE MAY/20

A-3

CORNER DESIGNATION

1/4 CORNER

- CONDITION REPORT ONLY
- NOT FOUND
- RENEWED
- UNCOVERED
- SURVEYED IN
- REFERENCED

PREVIOUS RENEWALS / SURVEYS, ETC.

IN 1995 EDWARDS SET A 5/8" X 30" IRON ROD WITH A 2" ALUMINUM CAP

MONUMENTS AND ACCESSORIES FOUND: CONDITION AND SOURCE

AN ALUMINUM TAG #951 ON A POWER POLE LIES N 19°16'45" W, 39.58 FEET.  
 AN ALUMINUM TAG #951 ON A POWER POLE LIES S 21°44'28" W, 37.01 FEET.  
 AN ALUMINUM TAG #951 ON A POWER POLE LIES S 80°27'01" E, 216.51 FEET.  
 AN ALUMINUM CAP STAMPED AS BELOW.

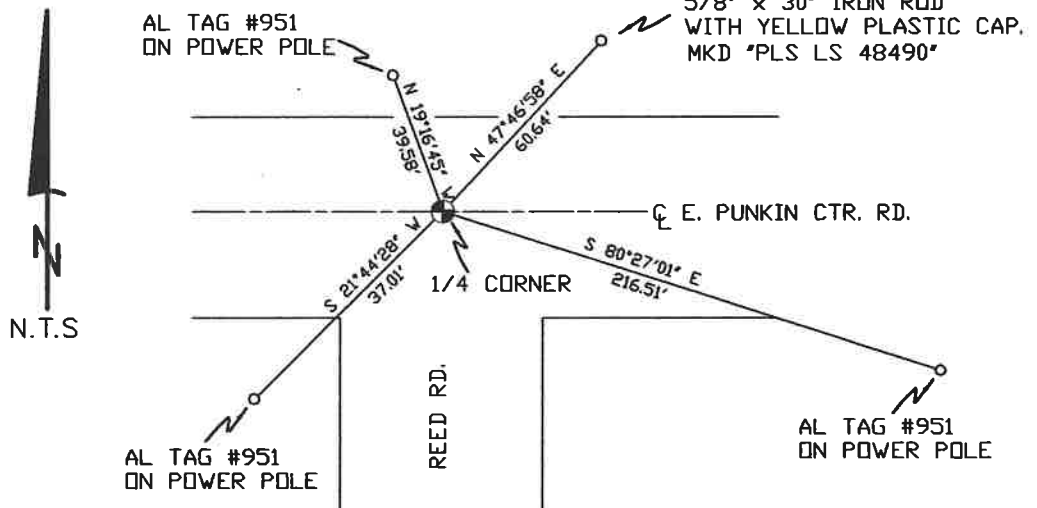
MONUMENT DETAIL

SKETCH



NAD 83/91  
 OREGON STATE PLANE  
 INTERNATIONAL FEET

803789.34  
 8524085.26



MONUMENT SET ( PROCEDURES AND DESCRIPTION )

NEW ACCESSORIES FROM WHICH

A 5/8" x 30" IRON ROD WITH A YELLOW PLASTIC CAP MKD "PLS LS 48490" LIES N 47°46'58" E, 60.64 FEET.

LOCATION AND COMMENTS

AT THE INTERSECTION OF REED RD. AND PUNKIN CENTER RD.

COMPASS DEC.

FIRM/AGENCY  
 PRIMM LAND SURVEYING  
 P.O. BOX 1322  
 HERMISTON, OREGON 97838

PARTY CHIEF  
 KEITH P. PRIMM

NOTES

WITNESS  
 KEITH P. PRIMM

SURVEYOR'S SEAL

REGISTERED  
 PROFESSIONAL  
 LAND SURVEYOR

*Keith P. Primm*  
 OREGON  
 JULY 12, 2005  
 KEITH P. PRIMM  
 48490

EXPIRATION DATE: 12/31/20

21-004-C

01 DEC 20