

OREGON CORNER RESTORATION FORM

SECTION 3,34 TOWNSHIP 4,5 NORTH RANGE 29 EAST
 COUNTY : UMATILLA DATE MAY/20

A-15

CORNER DESIGNATION

1/4 CORNER

CONDITION REPORT ONLY
 NOT FOUND
 RENEWED
 UNCOVERED
 SURVEYED IN
 REFERENCED

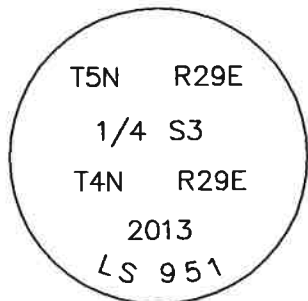
PREVIOUS RENEWALS / SURVEYS, ETC.

IN 2013 EDWARDS SET A 2 3/8" BC BY SINGLE PROPORTIONING.

MONUMENTS AND ACCESSORIES FOUND: CONDITION AND SOURCE

- A 5/8" IRON ROD WITH A PLASTIC CAP STAMPED "#951" BEARS S 30°11'17" E, 53.90 FEET.
- A 5/8" IRON ROD WITH A PLASTIC CAP STAMPED "#951" BEARS N 14°22'36" E, 64.59 FEET.
- A 5/8" IRON ROD WITH A PLASTIC CAP STAMPED "#951" BEARS N 72°22'50" W, 61.57 FEET.
- A 5/8" IRON ROD WITH A PLASTIC CAP STAMPED "#951" BEARS S 33°26'46" W, 341.93 FEET.
- A 2 3/8" BC STAMPED AS BELOW.

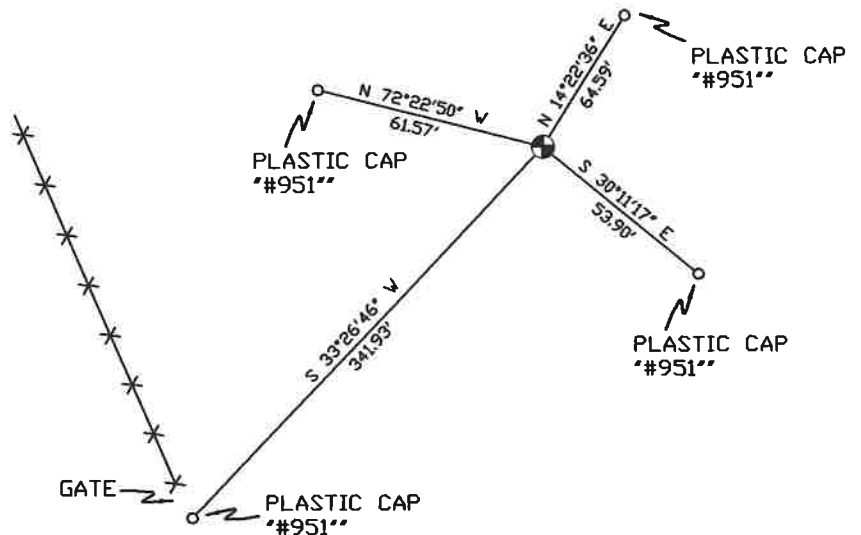
MONUMENT DETAIL



NAD 83/91
 OREGON STATE PLANE
 INTERNATIONAL FEET

803991.70
 8539903.67

SKETCH



MONUMENT SET (PROCEDURES AND DESCRIPTION)

NEW ACCESSORIES FROM WHICH

LOCATION AND COMMENTS

FROM ENTRANCE OF COLD SPRINGS
 WILDLIFE REFUGE AT PUNKIN CTR.
 AND TABOR RDS. GO SOUTH ON THE
 DAM ACCESS RD. 600' AND EAST
 1600' AND SOUTHEAST 400' TO ANGLE
 POINT IN ROAD A METAL GATE LIES 50'
 TO THE EAST. THE CORNER LIES
 N 33° & E 340' FROM THE GATE.

COMPASS DEC.

FIRM/AGENCY
 PRIMM LAND SURVEYING
 P.O. BOX 1322
 HERMISTON, OREGON 97838

PARTY CHIEF
 PAUL P. PILCH

NOTES

WITNESS
 KEITH P. PRIMM

SURVEYOR'S SEAL

REGISTERED
 PROFESSIONAL
 LAND SURVEYOR

Keith P. Primm
 OREGON
 JULY 12, 2005
 KEITH P. PRIMM
 48490

EXPIRATION DATE: 12/31/20

21-004-c

01 DEC 20