

OREGON CORNER RESTORATION FORM

SECTION: 3 TOWNSHIP: 4N

RANGE: 29E

A-15

COUNTY: UMATILLA

DATE: 9/2013

CORNER DESIGNATION

N 1/4

- CONDITION REPORT ONLY**
- NOT FOUND**
- RENEWED**
- UNRECORDED**
- SURVEYED IN**
- REFERENCED OUT**

PREVIOUS RENEWALS/SURVEYS ETC.

None

MONUMENTS AND ACCESSORIES FOUND: CONDITON AND SOURCE

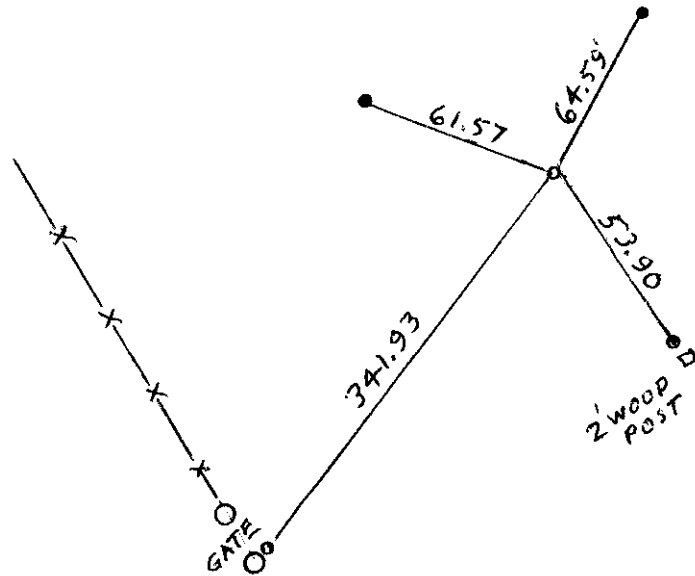
Nothing found.

MONUMENT DETAIL

T5N R29E
 1/4 S3
 T4N R29E
 2013
 LS 951

NAD 83/91

OREGON STATE PLANE
 INTERNATIONAL FEET
 803991.82
 8539903.57



MONUMENT SET (PROCEDURES AND DESCRIPTION)

By single proportion along the standard parallel I set a 1" x 30" iron pipe with a 2 1/2" brass cap stamped as above at the surface.

NEW ACCESSORIES FROM WHICH

- A 5/8" x 30" Iron Rebar with plastic cap #951 bears S 30° 11' 17" E 53.90'
- A 5/8" x 30" Iron Rebar with plastic cap #951 bears N 14° 22' 36" E 64.59'
- A 5/8" x 30" Iron Rebar with plastic cap #951 bears N 72° 22' 50" W 61.57'
- A 5/8" x 30" Iron Rebar with plastic cap #951 bears S 33° 26' 46" W 341.93'

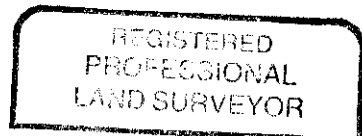
LOCATION AND COMMENTS

From the entrance to Cold Springs Wildlife Refuge at Punkin Center and Tabor roads go South on the dam access road 600' and East 1600' and Southeast 400' to an angle point in the road from which a metal gate lies 50'+- to the east. The corner lies N 33° E 340' from the gate.

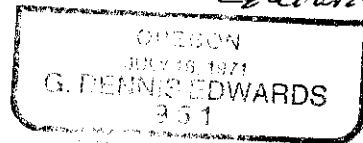
FIRM: EDWARDS SURVEYING LLC
 PO BOX 763 - HERMISTON OR 97838

PARTY CHIEF: G. EDWARDS
 WITNESS: R. FRITZ

SURVEYOR'S SEAL



G. Dennis Edwards



RENEWS 12/31/13

13-532-C