

OREGON CORNER RESTORATION FORM

SECTION 4 TOWNSHIP 4N RANGE 29E A-13

COUNTY: UMATILLA DATE 9/90

CORNER DESIGNATION

N E Corner

CONDITION REPORT ONLY

NOT FOUND

RENEWED

UNRECORDED

X SURVEYED IN

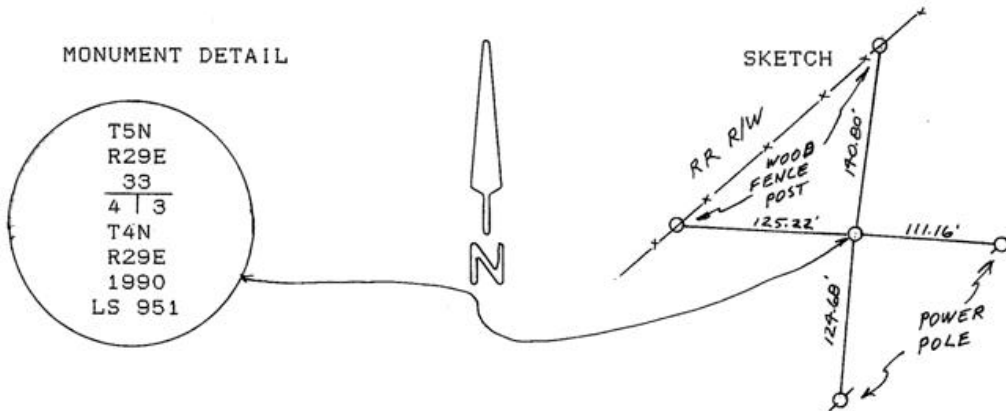
X REFERENCED OUT

PREVIOUS RENEWALS/SURVEYS, ETC.

Original survey by Davenport in 1861 under Contract #101. He set post. Kimbrell did Survey #308 in 1910, in Section 4.

MONUMENTS & ACCESSORIES FOUND: Condition and Source

Nothing found.



MONUMENT SET (PROCEDURES AND DESCRIPTION)

By single proportion I set 1"x30" Iron pipe with 2 3/8" Brass Cap, stamped as above, 15" below the surface in a pasture. SEE CO. SUR. #

NEW ACCESSORIES

From which

Alum. tag #951 in fence post	Bears. N6° 04' 40"E	140.80 feet
Alum. " #951 in " "	Bears. N87° 52'W	125.22 feet,
Alum. " #951 " power pole	Bears. S4° 54'30"W	124.68 feet,
Alum. " #951 in " "	Bears. S86° 19'40"E	111.16 feet.

Attached B.O. signs to all

LOCATION & COMMENTS

1 mile East of Inter-section of Edwards Rd., and Punkin Center Rd., in a field 125 feet East of East RR R/W on line with Punkin Center.

COMPASS DEC.  
FIRM EDWARDS SURVEYING  
P.O. BOX 763, HERMISTON,  
OREGON, 97838  
PARTY CHIEF D. EDWARDS

NOTES  
WITNESS J. COPPOCK  
RECEIVED BY

Umatilla County Surveyor  
Date 11-90  
Field by KA  
No. 90-077-B

SURVEYOR'S SEAL

REGISTERED  
PROFESSIONAL  
LAND SURVEYOR

G. Dennis Edwards

OREGON  
JULY 15, 1971  
G. DENNIS EDWARDS  
951