

OREGON CORNER RESTORATION FORM

SECTION 3,4,33 TOWNSHIP 4,5 NORTH RANGE 29 EAST
 COUNTY : UMATILLA DATE MAY/20

A-13

CORNER DESIGNATION

SECTION CORNER

- CONDITION REPORT ONLY
- NOT FOUND
- RENEWED
- UNCOVERED
- SURVEYED IN
- REFERENCED

PREVIOUS RENEWALS / SURVEYS, ETC.

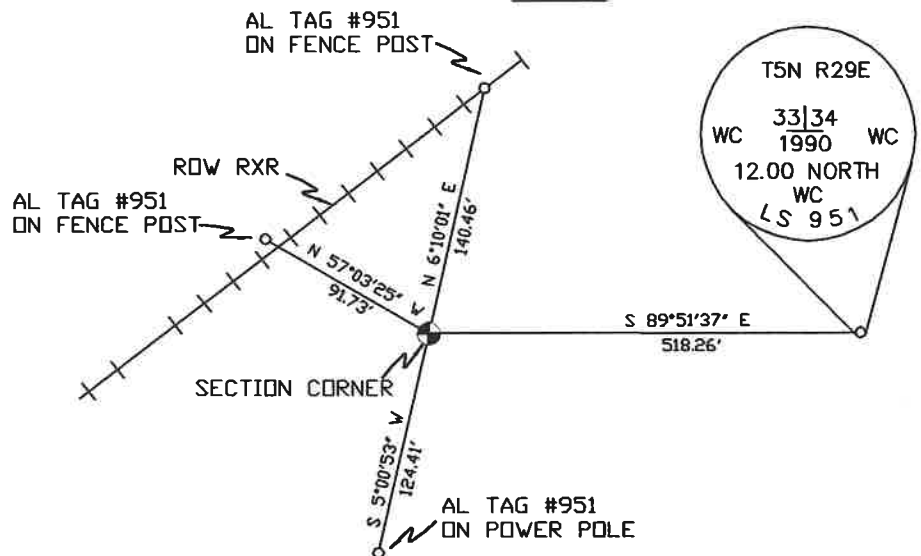
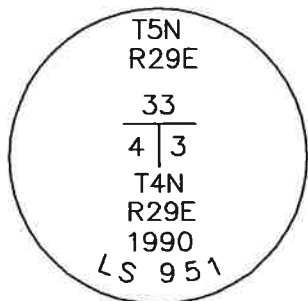
ORIGINALLY SURVEYED IN 1861 BY DAVENPORT UNDER CONTRACT #101. HE SET A POST.
 KIMBRELL DID SURVEY #308 IN 1910 IN SECTION 4.
 EDWARDS SET A 2 3/8" BC IN 1990.

MONUMENTS AND ACCESSORIES FOUND: CONDITION AND SOURCE

AN ALUMINUM TAG #951 ON A FENCE POST LIES N 6°10'01" E, 140.46 FEET.
 AN ALUMINUM TAG #951 ON A FENCE POST LIES N 57°03'25" W, 91.73 FEET.
 AN ALUMINUM TAG #951 ON A POWER POLE LIES S 5°00'53" W, 124.41 FEET.
 A BRASS CAP WITNESS CORNER LIES S 89°51'37" E, 518.26 FEET.
 A 2 3/8" BC STAMPED AS BELOW.

MONUMENT DETAIL

SKETCH



NAD 83/91
 OREGON STATE PLANE
 INTERNATIONAL FEET

803955.66
 8537284.83

MONUMENT SET (PROCEDURES AND DESCRIPTION)

NEW ACCESSORIES FROM WHICH

LOCATION AND COMMENTS

FROM INTERSECTION OF EDWARDS RD. AND PUNKIN CTR. RD. GO EAST 1 MILE, IN FIELD 125 EAST OF EAST R.R. ROW ON LINE WITH PUNKIN CTR RD.

COMPASS DEC.

FIRM/AGENCY
 PRIMM LAND SURVEYING
 P.O. BOX 1322
 HERMISTON, OREGON 97838

PARTY CHIEF
 PAUL P. PILCH

NOTES

WITNESS
 KEITH P. PRIMM

SURVEYOR'S SEAL

REGISTERED
 PROFESSIONAL
 LAND SURVEYOR

Keith P. Primm
 OREGON
 JULY 12, 2005
 KEITH P. PRIMM
 48490

EXPIRATION DATE: 12/31/20

JMA 21-004-c

DI DEC 20