

OREGON CORNER RESTORATION FORM

SECTION 4 TOWNSHIP 4 NORTH RANGE 29 EAST A-13
 COUNTY : UMATILLA DATE 01-2002

CORNER DESIGNATION

NE CORNER

- CONDITION REPORT ONLY
- NOT FOUND
- RENEWED
- UNCOVERED
- SURVEYED IN
- REFERENCED

PREVIOUS RENEWALS / SURVEYS, ETC.

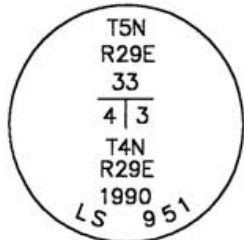
ORIGINALLY SURVEYED BY DAVENPORT IN 1861, #101. HE SET A POST.
 KIMBRELL DID SURVEY #308 IN 1910, IN SECTION 4.
 IN 1990 I SET A 1"X30" IRON PIPE WITH A 2 3/8" BRASS CAP.

MONUMENTS AND ACCESSORIES FOUND: CONDITION AND SOURCE

FOUND A 2 3/8" BRASS CAP FLUSH WITH THE SURFACE OF THE GROUND STAMPED AS BELOW.
 FROM WHICH:

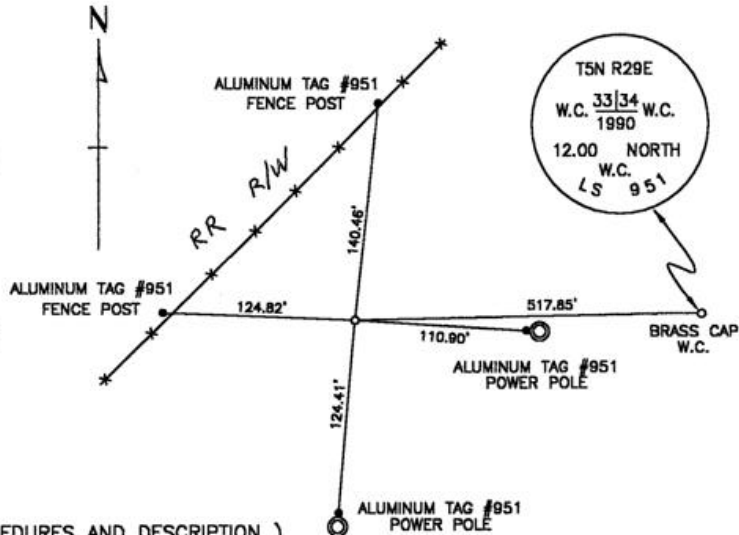
- AN ALUMINUM TAG #951 ON A FENCE POST BEARS N 87°45'15" W 124.82 FEET
- AN ALUMINUM TAG #951 ON A FENCE POST BEARS N 6°10'01" E 140.46 FEET
- AN ALUMINUM TAG #951 ON A POWER POLE BEARS S 5°00'53" W 124.41 FEET
- AN ALUMINUM TAG #951 ON A POWER POLE BEARS S 86°13'27" E 110.90 FEET

MONUMENT DETAIL



NAD 83/91
 OREGON STATE PLANE
 INTERNATIONAL FEET
 803955.6036
 8537284.7298

SKETCH



MONUMENT SET (PROCEDURES AND DESCRIPTION)

NA

NEW ACCESSORIES FROM WHICH

A BRASS CAP MONUMENT WITNESS CORNER, BEARS N 88°51'11" E 517.85 FEET

LOCATION AND COMMENTS

1 MILE EAST OF INTERSECTION
 OF EDWARDS ROAD AND PUNKIN
 CENTER ROAD, IN A FIELD 125
 FEET EAST OF EAST R.R. R/W
 ON LINE WITH PUNKIN CENTER
 ROAD.

COMPASS DEC.

FIRM/AGENCY
 EDWARDS SURVEYING
 P.O. BOX 763
 HERMISTON, OREGON 97838

PARTY CHIEF
 CURTIS FAVOREL

NOTES

WITNESS
 WALT MUNDELL

SURVEYOR'S SEAL

REGISTERED
 PROFESSIONAL
 LAND SURVEYOR

G. Dennis Edwards

OREGON
 JULY 16, 1971
 G. DENNIS EDWARDS
 9 5 1
 RENEWS 12/31/2003

03-539