

OREGON CORNER RESTORATION FORM

SECTION 4.33 TOWNSHIP 4,5 NORTH RANGE 29 EAST A-11
 COUNTY : UMATILLA DATE 02/02

CORNER DESIGNATION

1/4 CORNER

X CONDITION REPORT ONLY

- NOT FOUND
- RENEWED
- UNCOVERED
- SURVEYED IN
- REFERENCED

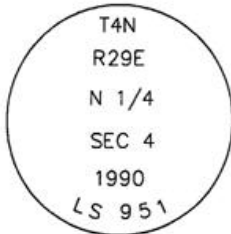
PREVIOUS RENEWALS / SURVEYS, ETC.

KIMBELL SURVEY #308 IN 1910, HE DID NOT SAY IF HE SET ANYTHING.
 IN 1990 EDWARDS SET A 1" X 30" IRON PIPE WITH A 2 3/8" BRASS CAP FLUSH WITH SURFACE OF PAVED ROAD STAMPED AS BELOW BY SINGLE PROPORTION.

MONUMENTS AND ACCESSORIES FOUND: CONDITION AND SOURCE

AN ALUMINUM TAG #951 ON A 12" LOCUST TREE LIES N 38°04'23" E, 24.17 FEET.
 AN ALUMINUM TAG #951 ON A RXR TIE FENCE PPOST LIES N 49°54'37" W, 30.90 FEET.
 AN ALUMINUM TAG #951 ON A 20" LOCUST TREE LIES S 10°56'48" W, 46.04 FEET.
 AN ALUMINUM TAG #951 ON A RXR TIE FENCE POST LIES S 18°40'17" E, 23.57 FEET.

MONUMENT DETAIL

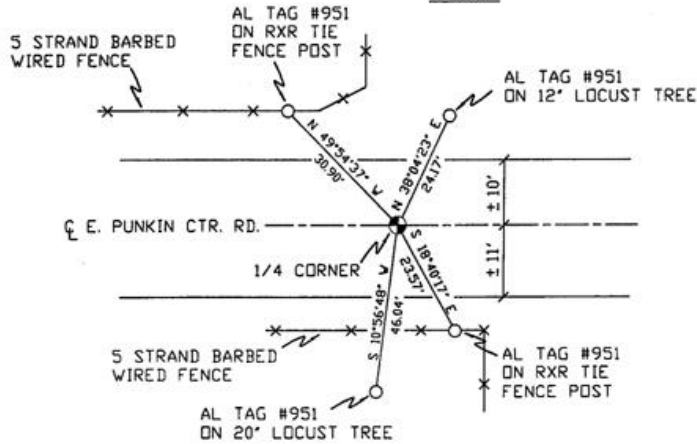


NAD 83/91
 OREGON STATE PLANE
 INTERNATIONAL FEET

803921.4708
 8534656.8498



SKETCH



MONUMENT SET (PROCEDURES AND DESCRIPTION)

NEW ACCESSORIES FROM WHICH

LOCATION AND COMMENTS

FROM INTERSECTION OF EDWARDS RD. AND PUNKIN CTR. RD. GO EAST ON PUNKIN CTR. RD. 1/2 MILE TO CORNER.

COMPASS DEC.

FIRM/AGENCY
 PRIMM LAND SURVEYING
 P.O. BOX 1322
 HERMISTON, OREGON 97838

PARTY CHIEF
 KEITH P. PRIMM

NOTES

WITNESS
 BRIT L. PRIMM

SURVEYOR'S SEAL

REGISTERED
 PROFESSIONAL
 LAND SURVEYOR

Brit L. Primm

OREGON
 JULY 13, 1999
 BRIT L. PRIMM
 48509

EXPIRATION DATE: 12/31/02

03-52-9