

# CORNER RESTORATION FORM

Township 4N Range 28E Section 34, 35 County UMATILLA

State OREGON Date 6-28-2019 Number X-17

Corner Designation : 34, 35

Previous Renewals ORIGINAL SOURCE OF CORNER

ORIGINALLY SURVEYED IN 1860 BY HAFT UNDER CONTRACT #93, HE SET POST IN MOUND WITH TRENCH, MADE PITS AND DEPOSITED A PINT OF CHARCOAL.

Accessories Found: \_\_\_\_\_

NONE.

Condition Report Only

- Not Found
- Renewed
- Surveyed In
- Referenced

### MONUMENT DETAIL

Found  Set

BASIS OF BEARINGS, NAD 83/91 OREGON STATE PLANE  
COORDINATES NORTH ZONE:

NORTHING: 774391.12  
EASTING: 8510734.66

Monument & Accessories Set (Procedure and Description)



SET 3 1/4" BRASS CAP ON 5/8"x30" IRON REBAR, AT AC GRADE, USING COUNTY ROAD NOTES, SET THE BRASS CAP AT THE CENTERLINE OF ROAD ON LINE BETWEEN THE SECTION CORNERS NORTH AND SOUTH.

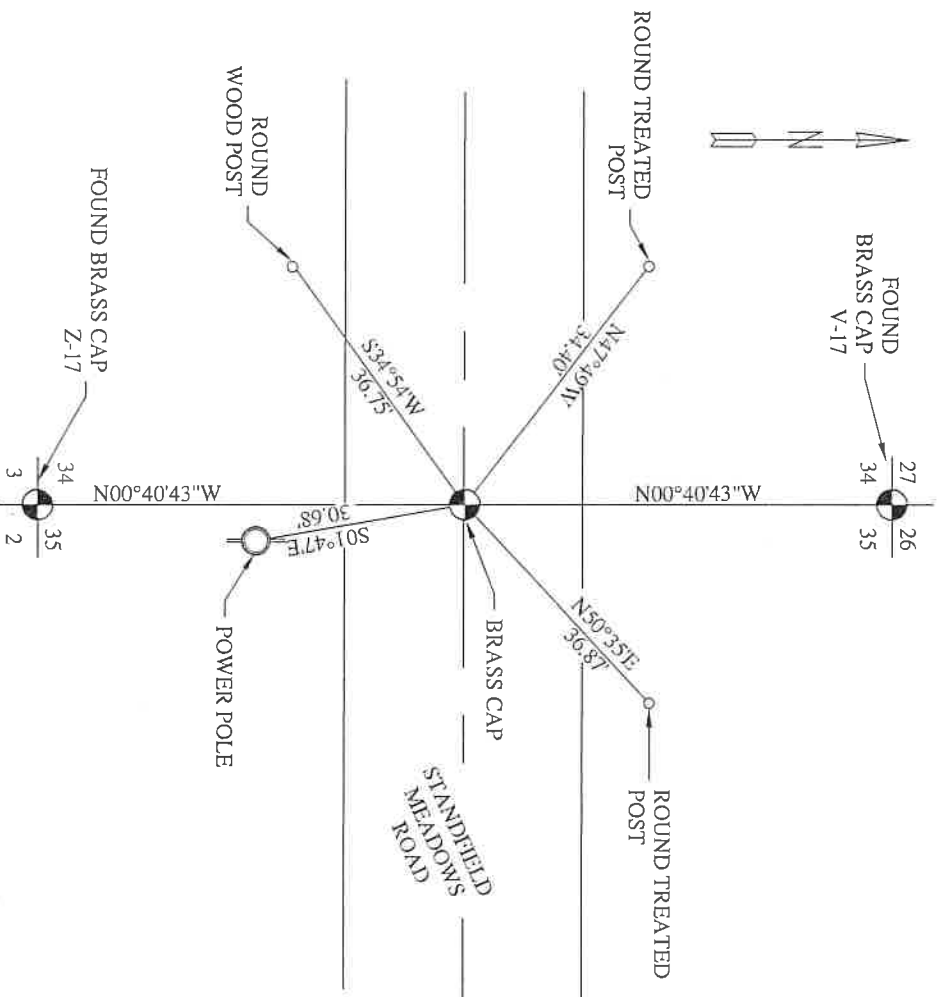
SET 1 1/2" STEEL WASHER MARKED 61420, ON ROUND TREATED POST w/MAG NAIL, N47°49'W, 34.40 FT.

SET 1 1/2" STEEL WASHER MARKED 61420, ON ROUND TREATED POST w/MAG NAIL, N50°35'E, 36.87 FT.

SET 1 1/2" STEEL WASHER MARKED 61420 w/SURVEY MARKER SIGN, ON POWER POLE, w/MAG NAIL, S01°47'E, 30.68 FT.

SET 1 1/2" STEEL WASHER MARKED 61420, ON ROUND TREATED POST w/MAG NAIL, S34°54'W, 36.75 FT.

Sketch of Monument, Accessories and General Area



**REGISTERED  
PROFESSIONAL  
LAND SURVEYOR**

*Lance Clark King*  
**OREGON  
MAY 10, 2011  
LANCE CLARK KING  
61420**

**RENEWALS: 6/30/2021**

Agency: CK3, LLC  
945 W. ORCHARD  
HERMISTON OREGON 97838  
OFFICE: 541-567-2345  
FAX: 541-567-2305  
WEB: CK3LLC.NET  
Field Book # 0-325

COUNTY SURVEYOR  
RECORDING INFO

Received \_\_\_\_\_  
Filed \_\_\_\_\_  
Survey No. \_\_\_\_\_  
Drawing No. \_\_\_\_\_  
Index No. X-17

19-080-C