

OREGON CORNER RESTORATION FORM

SECTION 25,30,31,36 TOWNSHIP 4 NORTH RANGE 28 & 29 EAST V-1
 COUNTY : UMATILLA DATE 01/02

CORNER DESIGNATION

SECTION CORNER

- CONDITION REPORT ONLY
- NOT FOUND
- RENEWED
- UNCOVERED
- SURVEYED IN
- REFERENCED

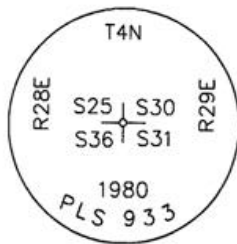
PREVIOUS RENEWALS / SURVEYS, ETC.

ORIGINALLY SURVEYED IN 1860 BY CAMPBELL UNDER CONTRACT #95. HE SET A POST DROVE CHARRED STAKE AND MADE PITS AND MOUNDS.
 IN 1980 KRUMBEIN SET A 2 1/2" BRASS CAP IN PLACE OF 2" IRON PIPE OF UNKNOWN ORGIN.

MONUMENTS AND ACCESSORIES FOUND: CONDITION AND SOURCE

AN ALUMINUM TAG #951 ON A R x R TIE FENCE CORNER LIES N 49°44'14" W, 16.30 FEET.
 AN ALUMINUM TAG #951 ON A POWER POLE LIES N 27°07'21" E, 76.79 FEET.
 AN ALUMINUM TAG #951 ON A TELEPHONE POLE LIES N 42°58'56" E, 157.88 FEET.

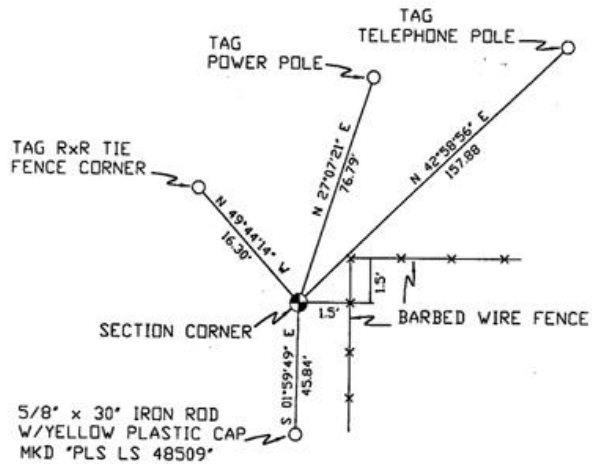
MONUMENT DETAIL



NAD 83/91
 OREGON STATE PLANE
 INTERNATIONAL FEET

777090.4655
 8521316.3508

SKETCH



MONUMENT SET (PROCEDURES AND DESCRIPTION)

RECEIVED BY

Umatilla County Surveyor

Date 2-02

Rec'd By KK

No. 02-49-g

NEW ACCESSORIES FROM WHICH

A 5/8" x 30" IRON ROD WITH A YELLOW PLASTIC CAP MKD "PLS LS 48509" LIES S 01°59'49" E, 45.84 FEET.

LOCATION AND COMMENTS

FROM COE ST. R x R CROSSING IN STANFIELD, GO WESTERLY ALONG SOUTHERLY SIDE OF R x R TRACKS 1.5 MILES. CORNER LIES JUST EAST OF N-S FENCE LINE.

COMPASS DEC.

FIRM/AGENCY
 PRIMM LAND SURVEYING
 P.O. BOX 1322
 HERMISTON, OREGON 97838

PARTY CHIEF
 KEITH P. PRIMM

NOTES

WITNESS
 BRIT L. PRIMM

SURVEYOR'S SEAL

REGISTERED
 PROFESSIONAL
 LAND SURVEYOR

Brit L. Primm
 OREGON
 JULY 13, 1999
 BRIT L. PRIMM
 48509

EXPIRATION DATE:12/31/02