

OREGON CORNER RESTORATION FORM

SECTION 27,34 TOWNSHIP 4 NORTH RANGE 28 EAST

V-15

COUNTY : UMATILLA DATE AUG/21

CORNER DESIGNATION

1/4 CORNER

CONDITION REPORT ONLY

NOT FOUND

RENEWED

UNCOVERED

SURVEYED IN

REFERENCED

PREVIOUS RENEWALS / SURVEYS, ETC.

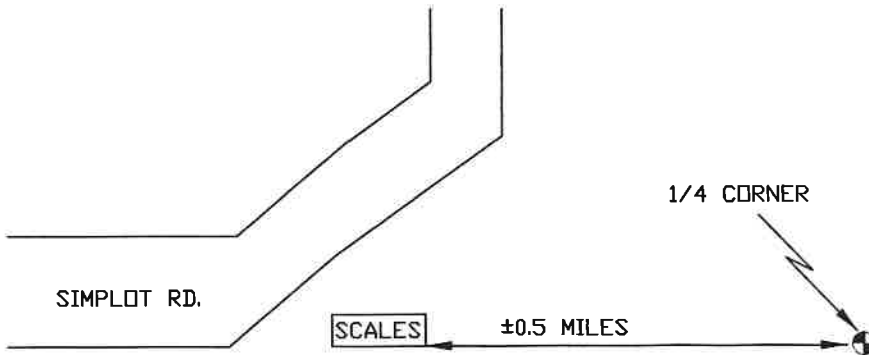
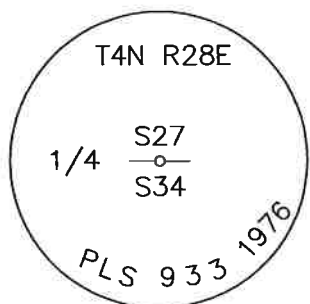
SURVEYED IN 1860 BY HAFT. LS 933 RESET THIS MONUMENT IN 1976. LS 951 RESET THIS MONUMENT IN 1991 BY SINGLE PROPORTION.

MONUMENTS AND ACCESSORIES FOUND: CONDITION AND SOURCE

I RECOVERED THE CORNER AND COMPARED ITS LOCATION WITH DUAL MONUMENTATION IN THE AREA AS REQUESTED. PLEASE REFER TO TO RECORD OF SURVEY THAT WAS RECORDED ALONG WITH THIS CORNER RESTORATION FORM FOR MY ANALYSES. THE ACCESSORIES FOR THE CORNER WERE NOT RECOVERED DURING THIS SURVEY DUE TO THE FACT IT HAD NO BEARING ON THE CORNERS LOCATION. PLEASE REFER TO SURVEY NUMBER 19-080-C AND THE CORNER RESTORATION FORMS RECORDED WITH SAID RECORD OF SURVEY FOR ACCESSORY INFORMATION.

MONUMENT DETAIL

SKETCH



NAD 83/91
OREGON STATE PLANE
INTERNATIONAL FEET

776992.94
8508028.56

MONUMENT SET (PROCEDURES AND DESCRIPTION)

NEW ACCESSORIES FROM WHICH

LOCATION AND COMMENTS

FROM THE SCALES AT THE SIMPLOT
POTATO PLANT GO EASTERLY ±0.5 MILES
THE CORNER FALLS SOUTHEASTERLY ±358
FEET FROM HOLDING PONDS.

FIRM/AGENCY

PRIMM LAND SURVEYING, INC.
P.O. BOX 1322
HERMISTON, OREGON 97838

SURVEYOR'S SEAL

LAND SURVEYOR

BRIT L. PRIMM

REGISTERED
PROFESSIONAL
LAND SURVEYOR

WITNESS

KEITH P. PRIMM

Brit L. Primm
OREGON
JULY 13, 1999
BRIT L. PRIMM
48509

EXPIRATION DATE: 12/31/22