

# CORNER RESTORATION FORM

Township 4N Range 28E Section 30, 29 County UMATILLA

State OREGON Date 6-28-2019 Number T-5

Corner Designation : 30, 29

Previous Renewals ORIGINAL SOURCE OF CORNER

ORIGINALLY SURVEYED IN 1860 BY HAFT UNDER CONTRACT #93, HE SET

POST IN MOUND WITH TRENCH, MADE PITS AND DEPOSITED A PINT OF

CHARCOAL.

Accessories Found: \_\_\_\_\_

NONE.

\_\_\_\_ Condition Report Only

\_\_\_\_ Not Found

\_\_\_\_ Renewed

\_\_\_\_ Surveyed In

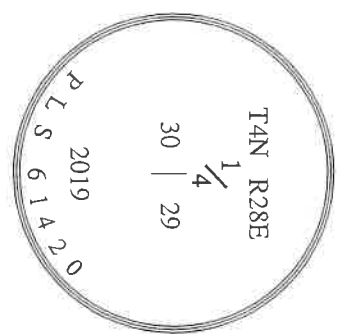
Referenced

### MONUMENT DETAIL

\_\_\_\_ Found  Set

**BASIS OF BEARINGS, NAD 83/91 OREGON STATE PLANE  
COORDINATES NORTH ZONE:**

NORTHING: 779571.33  
EASTING: 8494736.92



Monument & Accessories Set (Procedure and Description)

SET 2 1/2" x 30" w/BRASS CAP, 11" BELOW SURFACE UNDER POWERLINE WITH A SURVEY MARKER SIGN ON A GREEN STEEL POST. AS

PER COUNTY SURVEYS 93-51-C.

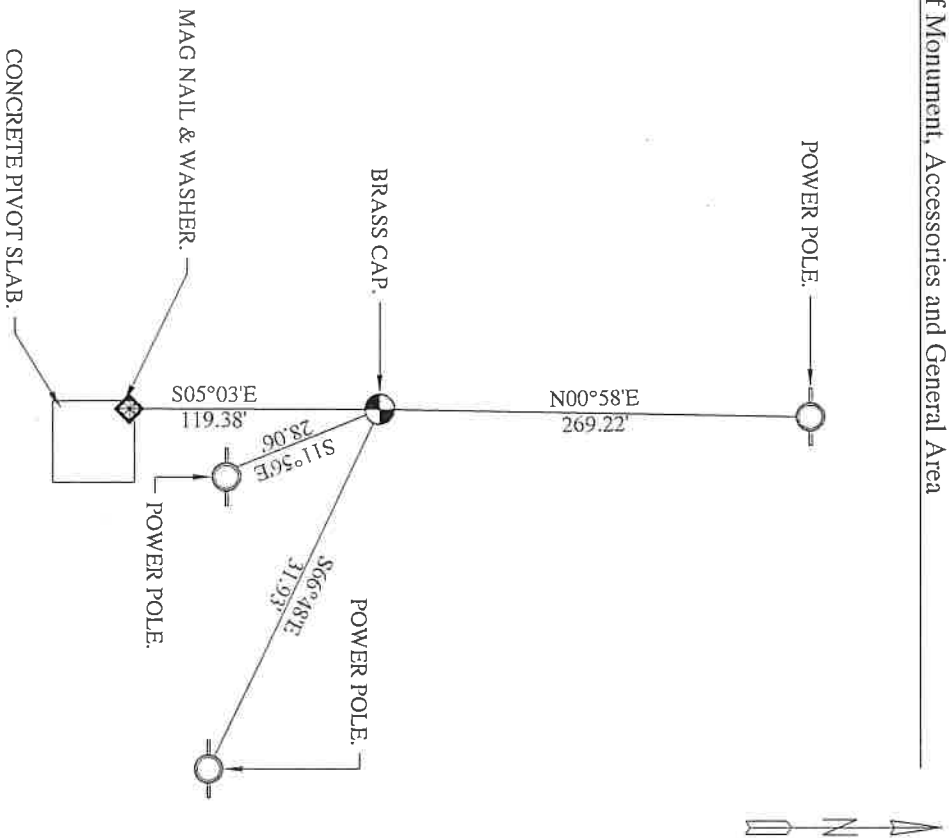
SET 5/8" x 30" REBAR w/RED PLASTIC CAP PLS 61420, 1 SOUTH OF POWER POLE, N00°58'E, 269.22 FT.

SET 1 1/2" STEEL WASHER MARKED 61420, ON POWER POLE, w/MAG NAIL, S66°48'E, 31.93 FT.

SET 1 1/2" STEEL WASHER MARKED 61420, ON NW CORNER OF CONCRETE PIVOT, w/MAG NAIL, S05°03'E, 119.38 FT.

SET 1 1/2" STEEL WASHER MARKED 61420, WITH SURVEY MARK SIGN ON POWER POLE, w/MAG NAIL, S11°56'E, 28.06 FT.

Sketch of Monument, Accessories and General Area



**REGISTERED  
PROFESSIONAL  
LAND SURVEYOR**

*Lance Clark King*

**OREGON**  
MAY 10, 2011  
**LANCE CLARK KING**  
61420

**RENEWALS: 6/30/2021**

Agency: CK3, LLC  
945 W. ORCHARD  
HERMISTON OREGON 97838  
OFFICE: 541-567-2345  
FAX: 541-567-2305  
WEB: CK3LLC.NET  
Field Book # 0-325

**COUNTY SURVEYOR  
RECORDING INFO**

Received \_\_\_\_\_

Filed \_\_\_\_\_

Survey No. \_\_\_\_\_

Drawing No. \_\_\_\_\_

Index No. T-5

19-080-C