

OREGON CORNER RESTORATION FORM

SECTION 7,12,13,18 TOWNSHIP 4 NORTH RANGE 28,29 EAST J-1

COUNTY : UMATILLA DATE 02/02

CORNER DESIGNATION

SECTION CORNER

CONDITION REPORT ONLY

NOT FOUND

RENEWED

UNCOVERED

SURVEYED IN

REFERENCED

PREVIOUS RENEWALS / SURVEYS, ETC.

ORIGINALLY SURVEYED IN 1860 BY CAMPBELL UNDER CONTRACT #95. HE SET A POST IN A MOUND OF EARTH.
IN 1980 KRUMBEIN SET A 2 1/2" B.C. SEE SURVEY #S-156.

MONUMENTS AND ACCESSORIES FOUND: CONDITION AND SOURCE

AN ALUMINUM TAG #951 ON A POWER POLE LIES N 36°16'57" E, 37.99 FEET.
AN ALUMINUM TAG #951 ON A POWER POLE LIES N 81°20'53" W, 221.70 FEET.
A 2 3/8" B.C. STAMPED AS BELOW LIES N 0°01'28" E, 9.94 FEET.
A 2 3/8" B.C. STAMPED AS BELOW LIES N 74°22'42" E, 20.59 FEET.

MONUMENT DETAIL

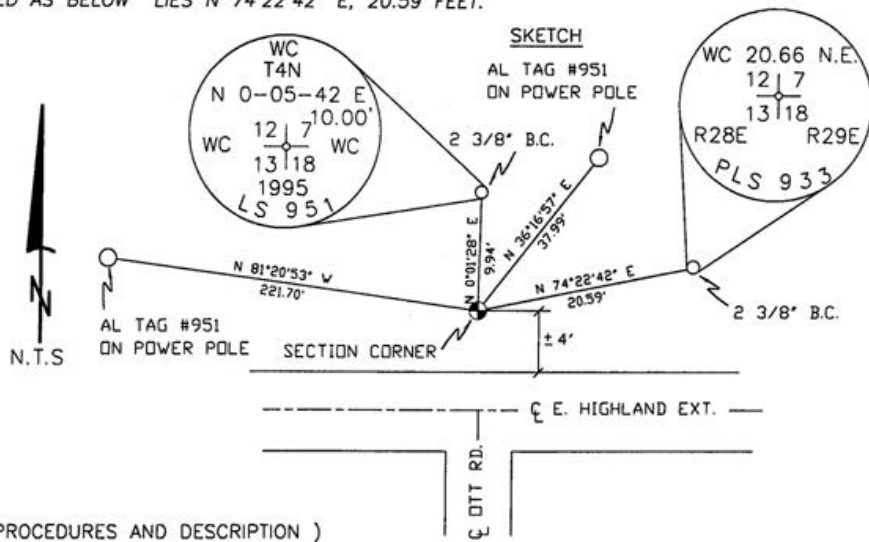


NAD 83/91
OREGON STATE PLANE
INTERNATIONAL FEET

792916.8569
8521063.9000

MONUMENT SET (PROCEDURES AND DESCRIPTION)

SKETCH



NEW ACCESSORIES FROM WHICH

LOCATION AND COMMENTS

FROM INTERSECTION OF HIGHLAND
EXT. WITH STANDFIELD LOOP RD.
GO EAST 1/4 MILE ON HIGHLAND
TO CORNER.

COMPASS DEC.

FIRM/AGENCY

PRIMM LAND SURVEYING
P.O. BOX 1322
HERMISTON, OREGON 97838

PARTY CHIEF

KEITH P. PRIMM

NOTES

WITNESS

BRIT L. PRIMM

SURVEYOR'S SEAL

REGISTERED
PROFESSIONAL
LAND SURVEYOR

BAVR

OREGON
JULY 13, 1999
BRIT L. PRIMM
48509

EXPIRATION DATE:12/31/02

03-52-9